



16TH ANNUAL MEETING
ORLANDO GRANDE LAKES
April 29 - May 3, 2015

Pre-Meeting Courses
April 29–30

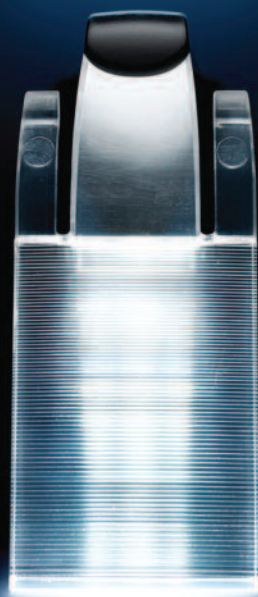
General Session
April 30–May 3

Program Chair
Sarah McLaughlin, MD, FACS
Associate Professor of Surgery
Section of Surgical Oncology
Program Director
General Surgery Residency
Mayo Clinic
Jacksonville, FL

ANNUAL MEETING
PROGRAM



Surgery. Redefined.



HIDDEN SCAR™

BREAST CANCER SURGERY

VISIT INVUITY AT BOOTH 615

www.invuity.com

Invuity, Inc. / 444 De Haro Street, San Francisco, CA 94107 Customer Service Tel: 866.711.7768 Fax: 888.614.8954 Invuity is a registered trademark and Intelligent Photonics is a trademark of Invuity, Inc. Patents www.invuity.com/patents. All rights reserved. ©2015 Invuity, Inc. LIT 11751 Rev. A



Welcome to Grande Lakes!

Dear colleagues,

Welcome to Orlando for the 16th Annual Meeting of The American Society of Breast Surgeons.



Perhaps this meeting is one that you never miss or maybe you are a first-time registrant—in either case, I think that you will agree it is going to be worth your efforts to be here. Our goal as we planned this program was to send you back to your practice armed with information that will enable you to employ new techniques, participate in research, collaborate with colleagues, and ultimately provide the best patient care possible.

This year we opted to return to our tried and true meeting format with full day pre-meeting courses on Wednesday and Thursday. I hope you had the opportunity to escape the rush of everyday clinical practice and arrive early to participate in one or more of these courses. This year's compilation of pre-meeting speakers represents years of practice experience and consists of thought leaders in our field and our Society. The general session starts late Thursday afternoon with the ever-popular Coding and Reimbursement session, which will include a quick quiz of your coding accuracy. That evening join us in the Exhibit Hall for the Opening Reception. Be sure to visit our sponsors and exhibitors who help us support this world class meeting and take advantage of the opportunity to mingle with friends.

Friday morning's general session is again this year preceded by the popular breakfast workshops. This year the workshops highlight clinical controversies, and management updates, and even provide intimate meet-the-professor opportunities. Although these do require pre-purchased tickets and are limited in capacity, some seats may still be available so be sure to check with the registration desk regarding onsite availability. The general session then opens with a perspective from a patient with the intent of reminding us of the positive difference we make in

our patients' lives. Further highlights on Friday include an examination of the extremes of breast cancer, insight into where breast care is going, advice on common technical problems, and perspective on the challenges we face as cancer clinicians in the coming years. Also, we will have our "great debates" in breast cancer, featuring Drs. Mamounas vs Morrow and Dr. Whitworth vs Ms. Joy Haidle, president of the Society of Genetic Counselors.

We will continue to use social media in select parts of the general session and have opted to run continuous Twitter feed in the meeting lobby to profile our impressions. Through this technology we as a society remain on the forefront of social media. Don't worry though if you need a refresher, as I do, on how to tweet, Dr. Deanna Attai will help us.

In addition, you won't want to miss the presidential address by Dr. Chip Cody entitled "... a part of the main" or the first of our scientific sessions. Then, before you head out to enjoy the city or relax in the nice Florida sunset, please stop by the Poster Session and Reception, where you can enjoy light refreshments, meet our poster presenters, and discuss their research.

Saturday's highlight is sure to be the keynote address by Dr. Monica Morrow, whose multiple contributions to breast cancer research and ability to distill data in a practical meaningful way have been practice-changing. You will also see presentations by the winners of our How I Do It video competition, and enjoy discussing those difficult cases during Community Tumor Board. At day's end, join our outgoing President Dr. Chip Cody for the President's Reception, where we will toast our appreciation for his leadership of the Society over the past year.

Last but certainly not least, Sunday morning offers an action-packed schedule with the ever-popular showcase of benign breast disease management challenges and finally a poignant session on the ethical and practical issues surrounding contralateral prophylactic mastectomy. I think you will agree that we have saved some of the best for last.

I encourage you to take some time to enjoy the relaxing Florida sun. The Grande Lakes resort certainly offers plenty of options for enjoying the weather and numerous onsite amenities. Of course if you are a bit more adventurous and energetic or brought your children, you can head to Disney or Universal, or tackle the high-end outlets for shopping.

Finally, if there is anything we can do to improve your experience at the annual meeting, please let us know. Our staff and leadership are committed to providing you with educational content and resources that support your efforts to provide quality patient care.

Sincerely,

Sarah A. McLaughlin, MD, FACS
2015 Program Chair

Don't Forget to Download the Official Meeting App!



Features maps, agenda, abstracts, exhibitors, and more. To download to your device, scan this code:



Or go to the App Store and search for "ASBrS 2015." Be sure to "opt in" to receive important alerts during the meeting and create a profile that will enable you to network with your fellow attendees. Complete instructions can be found in the flyer provided in your Meeting padfolio.

16th Annual Meeting

cme information

Meeting Objectives

Upon completion of this live activity, participants should be able to

- Identify current treatment and management options for breast patients
- Assess available studies of breast patients

Target Audience

Surgeons with a special interest in the treatment of breast disease.

Accreditation

The American Society of Breast Surgeons is accredited by the Accreditation Council for Continuing Medical Education to provide continuing medical education for physicians.

AMA Credit Designation

PRE-MEETING COURSES

WEDNESDAY, APRIL 29

Advanced Breast Imaging Solutions in Diagnostic Breast Care

The American Society of Breast Surgeons designates this live activity for a maximum of 8.25 *AMA PRA Category 1 Credits*[™]. Physicians should claim only the credit commensurate with the extent of their participation in the activity.

New Technologies

The American Society of Breast Surgeons designates this live activity for a maximum of 7 *AMA PRA Category 1 Credits*[™]. Physicians should claim only the credit commensurate with the extent of their participation in the activity.

Oncoplastic Surgery

The American Society of Breast Surgeons designates this live activity for a maximum of 8.5 *AMA PRA Category 1 Credits*[™]. Physicians should claim only the credit commensurate with the extent of their participation in the activity.

Stereotactic Breast Biopsy: An Introductory Course

The American Society of Breast Surgeons designates this live activity for a maximum of 8 *AMA PRA Category 1 Credits*[™]. Physicians should claim only the credit commensurate with the extent of their participation in the activity.

GENERAL SESSION

THURSDAY, APRIL 30–SUNDAY, MAY 3

The American Society of Breast Surgeons designates this live activity for a maximum of 22.5 *AMA PRA Category 1 Credits*[™]. Physicians should claim only the credit commensurate with the extent of their participation in the activity.

Earn up to 23.75 *AMA PRA Category 1 Credits*[™] Toward Part 2 of ABS Maintenance of Certification (MOC)

This year's general session and pre-meeting courses will not only provide opportunity for surgeons to earn *AMA PRA Category 1 Credits*[™], but will also include the self-assessment activities necessary to claim *AMA PRA Category 1 Credits*[™] toward Part 2 of the American Board of Surgery (ABS) Maintenance of Certification (MOC) Program. These activities are identified in the agenda by this icon:

MOC

To earn credit, log in as a member/user to the Society website, click on the Annual Meeting tab, and complete the following:

1. Online evaluations for the programs you have attended (CME).
2. Online posttests with a minimum score of 75%, no later than June 12 (MOC).

THURSDAY, April 30

Breast Cancer in Young Women

The American Society of Breast Surgeons designates this live activity for a maximum of 6.75 *AMA PRA Category 1 Credits*[™]. Physicians should claim only the credit commensurate with the extent of their participation in the activity.

Breast Ultrasound: An Introductory Course

The American Society of Breast Surgeons designates this live activity for a maximum of 7.25 *AMA PRA Category 1 Credits*[™]. Physicians should claim only the credit commensurate with the extent of their participation in the activity.

Starting a Radioactive Seed Program for Nonpalpable Breast Lesions

The American Society of Breast Surgeons designates this live activity for a maximum of 4.75 *AMA PRA Category 1 Credits*[™]. Physicians should claim only the credit commensurate with the extent of their participation in the activity.

The Evolving Breast Practice in a Changing Health Care Environment

The American Society of Breast Surgeons designates this live activity for a maximum of 6.25 *AMA PRA Category 1 Credits*[™]. Physicians should claim only the credit commensurate with the extent of their participation in the activity.

DISCLOSURE INFORMATION

In compliance with ACCME Accreditation Criteria, The American Society of Breast Surgeons, as the accredited provider of this activity, must ensure that anyone in a position control the content of the educational activity has disclosed all relevant financial relationships with any commercial interest. All reported conflicts are managed by a designated official to ensure a bias-free presentation. General session disclosures are provided to all attendees in a separate handout. Pre-meeting course disclosures are provided in the course programs.

The American Society of Breast Surgeons

The following individuals and groups have been involved in the planning, implementation, and evaluation of the annual meeting:

BOARD OF DIRECTORS

President

Hiram S. Cody, III, MD, FACS

President-Elect

Deanna J. Attai, MD, FACS

Secretary/Treasurer

Sheldon Marc Feldman, MD, FACS

Chairman of the Board

Victor J. Zannis, MD, FACS

Past President

Peter D. Beitsch, MD, FACS

Directors

Steven L. Chen, MD, MBA, FACS

Jeffrey Landercasper, MD, FACS

Julie A. Margenthaler, MD, FACS

Funda Meric-Bernstam, MD, FACS

C. Alden Sweetman, Jr, MD, FACS

Walton A. Taylor, MD, FACS

Executive Director

Jane M. Schuster

ANNUAL MEETING COMMITTEE

Chair

Sarah A. McLaughlin, MD, FACS

Committee

Deanna J. Attai, MD, FACS

Peter D. Beitsch, MD, FACS

Susan K. Boolbol, MD, FACS

Judy C. Boughey, MD, FACS

Hiram S. Cody, III, MD, FACS

Jill R. Dietz, MD, FACS

Sheldon Marc Feldman, MD, FACS

Rena B. Kass, MD, FACS

Victor J. Zannis, MD, FACS

Publications Committee Chair

Judy C. Boughey, MD, FACS

Image-Guided Course

Ad Hoc Committee

Beth A. Boyd, RN

Richard E. Fine, MD, FACS

CME COMMITTEE

Chair

Walton A. Taylor, MD, FACS

Committee

Michael P. Berry, MD, FACS

David N. Danforth, MD, FACS

Richard E. Fine, MD, FACS

Rakhshanda Layeequr Rahman, MD, FRCSEd, FACS

Sarah A. McLaughlin, MD, FACS

ETHICS COMMITTEE

Co-Chairs

Terry Sarantou, MD, FACS

Alyssa Throckmorton, MD, FACS

Committee

Stephanie Akbari, MD, FACS

N. Craig Brackett, III, MD, FACS

Laura S. Dominici, MD, FACS

Thomas Eisenhauer, MD, FACS

Nathalie G. Johnson, MD, FACS

Amanda L. Kong, MD, FACS

Kandice Ludwig, MD

Jennifer K. O'Neill, MD, FACS

Matthew S. Pugliese, MD, FACS

Paige Teller, MD

Lindi VanderWalde, MD

ASBrS STAFF

Marta Boyer

Christina Lucara

Tekoah White

16th Annual Meeting

Attendee Check-in & Onsite Registration

JW Marriott Grande Registration Desk (lobby level)

Tuesday, April 28.....5:00 pm–7:00 pm
(Pre-registered attendees only)

Wednesday, April 29.....6:30 am–6:00 pm

Thursday, April 30.....6:00 am–7:30 pm

Friday, May 1.....6:15 am–6:00 pm

Saturday, May 2.....7:00 am–6:00 pm

Sunday, May 3.....6:30 am–10:00 am

Society Program & Services Information Desk

Have questions about BESAP, membership, Mastery, the Breast Manual, certification, or how to follow the Society on Twitter or Facebook? Stop by the Society's Program and Services Information Desk, located in the JW Marriott Rotunda (lobby level), where staff and volunteers will be available to help you Thursday through Saturday.

Guest Registration

A "Guest" registration entitles the guest of a general session registrant to attend the Opening Reception and President's Reception, as well as visit the Exhibit Hall (including lunch and refreshment breaks in the Exhibit Hall on Friday and Saturday, May 1–2). Guest access is limited to those events/venues. Guests are not permitted in any educational programming (including courses) or any meals or refreshments other than those provided in the Exhibit Hall or at those two receptions.

General Session registrants may purchase guest registrations onsite at the meeting registration desk for \$175 each.

(Please note: Guest registration is not available for industry representatives.)



pre-meeting courses

WEDNESDAY, APRIL 29

▶ **Advanced Breast Imaging Solutions in Diagnostic Breast Care With Ultrasound and Stereotactic Breast Biopsy Focus**

Moderator: Michael Berry, MD, Tina Hieken, MD

Palazzo Ballroom Salon F-G, JW Marriott, Lobby Level

7:00 am–7:30 am Registration and Continental Breakfast
7:30 am–5:00 pm Course

▶ **New Technologies**

Moderator: Susan Boolbol, MD

LECTURE: Palazzo Ballroom Salon H, JW Marriott, Lobby Level

TECHNOLOGY SHOWCASE: Palazzo Ballroom Salon E, JW Marriott, Lobby Level

7:00 am–7:30 am Registration and Continental Breakfast
7:30 am–4:15 pm Course
11:45 am–1:15 pm Technology Showcase 1
3:15 pm–4:15 pm Technology Showcase 2

▶ **Oncoplastic Surgery**

Moderators: Krishna Clough, MD, Pat Whitworth, MD

Palazzo Ballroom Salon A-B, JW Marriott, Lobby Level

7:00 am–7:30 am Registration and Continental Breakfast
7:30 am–5:00 pm Course

▶ **Stereotactic Breast Biopsy: An Introductory Course**

Moderator: Souzan El-Eid, MD, Victor Zannis, MD

LECTURE: Palazzo Ballroom Salon C, JW Marriott, Lobby Level

WORKSHOP: Siena I-II, Ritz-Carlton, Lower Level

7:00 am–7:30 am Registration and Continental Breakfast
7:30 am–5:00 pm Course
9:30 am–Noon Workshop

Thursday, April 30

▶ **Breast Cancer in Young Women**

Moderators: Tari King, MD, Ann Partridge, MD

Palazzo Ballroom Salon A-B, JW Marriott, Lobby Level

7:00 am–7:30 am Registration and Continental Breakfast
7:30 am–3:30 pm Course

▶ **Breast Ultrasound: An Introductory Course**

Moderator: Lorraine Tafra, MD, Shawna Willey MD

LECTURE: Palazzo Ballroom Salon E, JW Marriott, Lobby Level

WORKSHOP: Ritz-Carlton Ballroom Salon I-III, Lobby Level

6:30 am–7:00 am Registration and Continental Breakfast
7:00 am–12:30 pm Course
12:30 pm–3:45 pm Workshop

▶ **Starting a Radioactive Seed Program for Nonpalpable Breast Lesions**

Moderators: Richard Gray, MD, James Jakub, MD

Off-Site Program: Registrants must meet outside JW Marriott Lobby no later than 7:45 am for transportation to Florida Hospital, Nicholson Center.

▶ **The Evolving Breast Practice in a Changing Health Care Environment**

Moderators: Steven Chen, MD, Alden Sweatman, MD

Palazzo Ballroom Salon D, JW Marriott, Lobby Level

7:30 am–8:00 am Registration and Continental Breakfast
8:00 am–3:30 pm Course

general session

THURSDAY, APRIL 30

Mediterranean Ballroom, JW Marriott, Lobby Level

4:00 pm–4:15 pm

Welcome

Hiram Cody III, MD
Sarah McLaughlin, MD

4:15 pm–5:15 pm

Coding and Reimbursement Symposium

Moderators: Mark Gittleman, MD
Richard Fine, MD
Costanza Cocilovo, MD

5:30 pm–7:30 pm

Satellite Symposium

A Deeper Dive Into Ductal Carcinoma In Situ: Clinical and Pathologic Considerations in 2015

This symposium will focus on treatment decision making and difficult clinical scenarios relevant to clinicians who provide care for patients with ductal carcinoma in situ (DCIS). The scientific agenda will feature an overview presentation, as well as interactive clinical scenarios utilizing an audience response system. This activity will provide attendees with practical insight from leading experts and help improve the integration of new data into clinical practice.

prIME Oncology is accredited by the Accreditation Council for Continuing Medical Education to provide continuing medical education (CME) for physicians.

prIME Oncology designates this live activity for a maximum of 2 AMA PRA Category 1 Credits™. Physicians should claim only the credit commensurate with the extent of their participation in the activity.

NOTE: This satellite symposium is supported by Genomic Health, Inc., through a marketing grant. It is not part of the official program of the ASBrS. CME credits for this program will be provided by prIME Oncology. This activity is free to all registered attendees.

7:30 pm–9:00 pm

Opening Reception in Exhibit Hall

Coquina Ballroom, JW Marriott, Lobby Level

Enjoy food and drink while meeting fellow members and representatives from the industry's top vendors and getting a first look at this year's exhibits.



Next-Day Access to General Session Presentations Available to Meeting Attendees

2015 meeting attendees will be able to view and/or download general session PowerPoint presentations (with some exceptions) via the Society website approximately 24 hours following each live presentation. To access, you must log onto www.breastsurgeons.org as a member or registered user and be a 2015 annual meeting registrant.

Free Online Access to Video Recordings of General Session for All Registered Attendees

Video recordings of each general session presentation, integrated with the PowerPoint presentations (with some exceptions), will be available online FREE to all meeting registrants approximately 4 to 6 weeks following the meeting. Providing materials online following the program ensures that attendees have access to the actual presentations used by each speaker onsite.

Vendor Symposia

Vendor-supported symposia, which have been made possible through marketing support, will be held Thursday and Friday evening, and Saturday morning. Details on these vendor-supported symposia can be seen on pages 4, 7, and 9 in this program.

Note: Vendor symposia are not part of the official American Society of Breast Surgeons annual meeting program and no AMA PRA Category 1 Credits™ have been assigned to them by the Society.

6:45 am–7:45 am

Breakfast Workshops **MOC**

Pre-purchased tickets are required for the following workshops and must be presented at the door. A limited number of tickets are available at the Registration Desk for \$80.

B1	Surgical Considerations in Patients Receiving Neoadjuvant Chemotherapy <i>Palazzo Ballroom Salon D, JW Marriott, Lobby Level</i>	Catherine Akay, MD Andrea Barrio, MD
B2	Incorporating Technology in Your Practice: Tweet, Meet, and Treat <i>Palazzo Ballroom Salon C, JW Marriott, Lobby Level</i>	Deanna Attai, MD Michael Cowher, MD
B3	Spicing Up Your Multidisciplinary Meeting: A Perspective From Abroad <i>Palazzo Ballroom Salon B, JW Marriott, Lobby Level</i>	Emiel Rutgers, MD
B4	Mastering Mastery 2.0 <i>Palazzo Ballroom Salon A, JW Marriott, Lobby Level</i>	Linda Smith, MD Kathryn Wagner, MD
B5	Benign Breast Disease: A Clinical Challenge <i>Palazzo Ballroom Salon E, JW Marriott, Lobby Level</i>	Jane Mendez, MD Alyssa Throckmorton, MD
B6	DCIS—What’s New? <i>Palazzo Ballroom Salon F, JW Marriott, Lobby Level</i>	Lynn Dengel, MD Shelley Hwang, MD
B7	Treatment and Prognosis of Rare Breast Cancers <i>Palazzo Ballroom Salon H, JW Marriott, Lobby Level</i>	Dennis Holmes, MD Alicia Terando, MD
B8	Navigating the Controversies in Breast Radiotherapy <i>Palazzo Ballroom Salon G, JW Marriott, Lobby Level</i>	Jennifer Bellon, MD Mehra Golshan, MD Larry Solin, MD

Scientific Session Abstracts

All scientific abstracts presented, either orally or as a poster, at this year’s meeting can be viewed as follows:

- Through the American Society of Breast Surgeons 2015 Annual Meeting mobile app (*See page 1.*)
- On the 2015 Annual Meeting page of the Society website (*Click on “2015 Official Proceedings.”*)

In addition, Society members can access the Official Proceedings of the 16th Annual Meeting as part of their subscription to the *Annals of Surgical Oncology* as follows:

1. Log into the Society website, www.breastsurgeons.org.
2. Click on the Education tab.
3. Select *Annals of Surgical Oncology*.
4. In the keyword search box of the Annals page, type “2015 Annual Meeting Official Proceedings, Volume XVI.”



general session

FRIDAY, May 1

Mediterranean Ballroom, JW Marriott, Lobby Level

8:00 am–8:05 am	Welcome	Sarah McLaughlin, MD
8:05 am–8:10 am	Tweeting	Deanna Attai, MD
8:10 am–8:20 am	Perspectives From a Breast Cancer Survivor	Alicia Staley
8:20 am–9:40 am	Extreme Breast Cancer MOC and Tweet session	Moderator: Jill Dietz, MD Tweet Moderators: Deanna Attai, MD Alicia Staley Jill Dietz, MD Ann Partridge, MD Sara Javid, MD Henry Kuerer, MD Mary Gemignani, MD Stephen Grobmyer, MD
	<ul style="list-style-type: none"> ▶ Welcome and Introduction ▶ Breast Cancer in the Very Young ▶ Screening Considerations in the Elderly ▶ Male Breast Cancer ▶ Breast Cancer During Pregnancy ▶ Angiosarcoma ▶ Q & A 	
9:40 am–10:10 am	Break in Exhibit Hall, Coquina Ballroom, JW Marriott, Lobby Level	
10:10 am–11:20 am	Clinical Controversies	Moderator: Barbara Pockaj, MD Barbara Pockaj, MD
	<ul style="list-style-type: none"> ▶ Welcome and Introduction ▶ Neoadjuvant Chemotherapy Is the Standard of Care <ul style="list-style-type: none"> – Yes – No ▶ Contemporary Challenges in Genetic Testing <ul style="list-style-type: none"> – Perspective From a Breast Surgeon – Perspective From a Genetic Counselor 	Terry Mamounas, MD Monica Morrow, MD Pat Whitworth, MD Joy Larsen Haidle, MS
11:20 am–11:25 am	Presidential Address Introduction	Deanna Attai, MD
11:25 am–Noon	Presidential Address: "...a part of the main"	Hiram Cody III, MD
Noon–1:00 pm	Lunch in Exhibit Hall, Coquina Ballroom, JW Marriott, Lobby Level	
Noon–1:00 pm	Special Lunches (<i>by invitation only</i>)	
	<ul style="list-style-type: none"> ▶ Breast Fellows, Ritz-Carlton Ballroom Salon III, Lobby Level ▶ NSMR Investigators Meeting/Lunch, Cordova 5, JW Marriott, Lower Level 	
Noon–1:00 pm	Updates in Breast Ultrasound Certification Luncheon Ritz Carlton Ballroom Salon I-II, Lobby Level	
Noon–1:00 pm	Alliance for Clinical Trials in Oncology/ American College of Surgeons Investigators Meeting/Lunch Cordova 2, JW Marriott, Lower Level	





Business Meeting
5:30 pm–6:00 pm

Get an update on the Society's programs and activities from our leadership at the annual business meeting. Incoming board members will be introduced. *All Society members are encouraged to attend.*

Poster Session and Reception
6:00 pm–7:30 pm
Mediterranean and Palazzo Prefunction, JW Marriott, Lobby Level

Don't miss this opportunity to review the latest scientific developments in a relaxing atmosphere and meet the presenters, while enjoying light refreshments. *Free to all registered attendees.*

1:00 pm–2:30 pm

Health Policy

- ▶ Welcome and Introduction
- ▶ Breast-Specific Quality Initiatives and How Mastery Can Help Quality Reporting
- ▶ Payer-Provider Perspectives
- ▶ Issues Surrounding Medicare Physician Payment Reform
- ▶ Impending Changes in Cancer Care From the Perspective of a Prior ASCO President and Current Breast Medical Oncologist
- ▶ Global Perspectives: Breast Cancer Screening in India—Facts, Realities, and Solutions
- ▶ Q&A

Moderator: Costanza Cocilovo, MD

Costanza Cocilovo, MD

Jeffrey Landercasper, MD

C. Alan Henry, MD

Christian Shalgian, MD

Clifford Hudis, MD

P. Raghu Ram, MS

2:30 pm–3:40 pm

Scientific Session Oral Presentations I

- Complete Blood Count and Liver Function Tests As Routine Screening in Early Stage Breast Cancer: Value Added or Just Cost?
- Cost-Effectiveness of Bilateral Prophylactic Mastectomy in Patients at High Risk for Breast Cancer Without a Known BRCA Mutation
- Survival Outcomes and Pathological Features Amongst Breast Cancer Patients Who Have Developed a Contralateral Breast Cancer
- Adjuvant Endocrine Therapy in Patients with Ductal Carcinoma In Situ in the National Cancer Database
- Tumor Expression of Vitamin D Receptor and Breast Cancer Histopathological Characteristics and Prognosis

Moderators: Judy Boughey, MD

David Brenin, MD

Raphael Louie, MD, MPH

Brandy Edwards, MD

Erik Liederbach, BS

Meghan Flanagan, MD

Jamila Al-Azhri, MD

3:40 pm–4:10 pm

Break in Exhibit Hall, **Coquina Ballroom, JW Marriott, Lobby Level**

4:10 pm–5:30 pm

Tips and Tricks and Is There Really Any Data?

- ▶ Welcome and Introduction
- ▶ Oncoplastic Techniques That All Breast Surgeons Can Master
- ▶ Chronic Seroma—Avoidance and Treatment
- ▶ Internal Mammary Lymph Node Biopsy
- ▶ Re-do SLNB After BCT or Mastectomy
- ▶ Update on the ASBrS NSM Registry
- ▶ Q&A

Moderators: Thomas Frazier, MD

Theresa Schwartz, MD

Thomas Frazier, MD, Theresa Schwartz, MD

Krishna Clough, MD

Eric Manahan, MD

David Ollila, MD

John Kiluk, MD

Sunny Mitchell, MD

5:30 pm–6:00 pm

Annual Business Meeting

Get an update on the Society's programs and activities from our leadership. Incoming board members will be introduced. All Society members are encouraged to attend.

6:00 pm–7:30 pm

Poster Session and Reception

Mediterranean and Palazzo Prefunction, JW Marriott, Lobby Level

7:30 pm–9:30 pm

Vendor Symposia

- ▶ Genentech, Inc.
Palazzo Ballroom Salon E-H, JW Marriott, Lobby Level
- ▶ Myriad Genetic Laboratories, Inc.,
Palazzo Ballroom Salon A, JW Marriott, Lobby Level

Note: These satellite symposia are supported by vendors through a marketing grant. They are not part of the official program of the ASBrS. CME credits for these programs, if applicable, will not be provided by the ASBrS. These activities are free to all registered attendees.



PAST PRESIDENTS

1995 – 1997Robert B. Caplan, MD
1997 – 1999C. Alan Henry, MD
1999 – 2000Rache M. Simmons, MD
2000 – 2001Mark A. Gittleman, MD
2001 – 2002Arthur G. Lerner, MD
2002 – 2003Michael J. Edwards, MD
2003 – 2004Richard E. Fine, MD
2004 – 2005Lorraine Tafra, MD
2005 – 2006Edgar D. Staren, MD, PhD, MBA
2006 – 2007Helen A. Pass, MD
2007 – 2008Jay K. Harness, MD
2008 – 2009Shawna C. Willey, MD
2009 – 2010Victor J. Zannis, MD
2010 – 2011Eric B. Whitacre, MD
2011 – 2012Howard C. Snider, Jr., MD
2012 – 2013V. Suzanne Klimberg, MD
2013 – 2014Peter D. Beitsch, MD

general session

SATURDAY, May 2

Mediterranean Ballroom, JW Marriott, Lobby Level



Keynote Speaker:
Monica Morrow, MD, FACS

11:30 am – 12:30 pm

**Rethinking the Local Therapy of Breast Cancer:
Integration of Biology and Anatomy**

Dr. Monica Morrow is Chief, Breast Service, Burnett Windfohr Chair of Clinical Oncology, and Professor of Surgery at Memorial Sloan Kettering Cancer Center, as well as Professor of Surgery, Weill Cornell Medical College, Weill Medical College of Cornell University in New York. Her current research interests include the application of clinical trials data in practice, the evaluation of new technology related to local therapy of breast cancer, and surgical decision making.

President's Reception

6:00 pm–7:30 pm
**Valencia Terrace,
JW Marriott,
Lower Level**



Join your colleagues immediately following the general session on the Grand Patio to toast the Society's outgoing president, Dr. Hiram Cody III. Winners of the scientific session awards will also be announced.

6:30 am–7:45 am

Vendor Symposia

- ▶ Ambry Genetics, Inc., **Palazzo Ballroom Salon F-H, JW Marriott, Lobby Level**
- ▶ Cianna Medical, **Palazzo Ballroom Salon D, JW Marriott, Lobby Level**
- ▶ ImpediMed, Inc., **Palazzo Ballroom Salon A-C, JW Marriott, Lobby Level**
- ▶ Pacira Pharmaceuticals, Inc., **Ritz Carlton Ballroom Salons I-II**
- ▶ Xoft, Inc. a subsidiary of iCAD, Inc., **Palazzo Ballroom Salon E, JW Marriott, Lobby Level**

These satellite symposia are supported by vendors through a marketing grant. They are not part of the official program of the ASBrS. CME credits for these programs, if applicable, will not be provided by the ASBrS. These activities are free to all registered attendees.

8:00 am–9:30 am

**Adjuvant Therapies and Outcomes MOC
and Tweet session**

- ▶ Welcome and Introduction
- ▶ Chemoprevention
- ▶ Promising New Therapeutic Targets
- ▶ CTCs and cfDNA: Developing a Liquid Biopsy for Breast Cancer
- ▶ Integrative Oncology for the Prevention and Treatment of Breast Cancer
- ▶ Learning From Our Past: Do Quality Measures and Outcomes Really Improve?
- ▶ Q&A

*Moderator: Funda Meric-Bernstam, MD
Tweet Moderators: Michael Cowher, MD
Diane Radford, MD
Funda Meric-Bernstam, MD
Sandhya Pruthi, MD
Carey Anders, MD
Minetta Liu, MD

Beth DuPree, MD

Marie Jean Vrancken Peeters, MD*

9:30 am–10:00 am

Break in Exhibit Hall, **Coquina Ballroom, JW Marriott, Lobby Level**

10:00 am–10:10 am



**THE AMERICAN SOCIETY OF BREAST SURGEONS/
Arnold P. Gold Foundation Humanism in Medicine Award**

*Presenters: Sheldon Feldman, MD
Richard Levin, MD
Terry Sarantou, MD*

10:10 am–11:15 am

"How I Do It" Videos

- *Skin-Reduction Nipple-Sparing Mastectomy*
- *Local Infiltration of Liposomal Bupivacaine in Patients Undergoing Mastectomy with Immediate Tissue Expander Reconstruction*
- *Double-Donut Technique for Reduction Mammoplasty*
- *Oncoplastic Split Reduction with Intraoperative Radiation Therapy*
- *Nipple Release*
- *Evolving Beyond Standard Supermicrosurgery—the "Octopus" Lymphaticovenular Anastomosis*
- *A Simple Intervention to Relieve Chest Wall Pain Due to Postmastectomy Pain Syndrome*

*Moderators: Brian Czerniecki, MD,
Jan Wong, MD

Jill Dietz, MD

Jad Abdelsattar, MBBS
Zachary Young, MD
Nirav Savalia, MD
Brittany Murphy, MD

John Heineman, MD, MPH

Mikki Seagren, DO*

general session

SATURDAY, May 2

Mediterranean Ballroom, JW Marriott, Lobby Level

11:15 am–Noon

Keynote Address

Rethinking the Local Therapy of Breast Cancer: Integration of Biology and Anatomy

Monica Morrow, MD

Noon–1:45 pm

Lunch in Exhibit Hall, **Coquina Ballroom, JW Marriott, Lobby Level**

Noon–1:45 pm

Quickshot Presentations (Lunch will be provided. Free to all registrants.)

Palazzo Ballroom Salon D-E, JW Marriott, Lobby Level

- *Biologic vs Socioeconomic Causes for Late-Stage Breast Cancer in African-American Women*
- *Single-Institution Experience with Lymphatic Microsurgical Preventive Healing Approach (LYMPHA) for the Primary Prevention of Lymphedema*
- *Multi-Gene Panel Testing Detects Equal Rates of Pathogenic BRCA1/2 Mutations and Has a Higher Diagnostic Yield Compared to Limited BRCA1/2 Analysis Alone in Patients at Risk for Hereditary Breast Cancer*
- *Axillary Ultrasound Findings Correlate with Nodal Metastatic Burden, but Standardized Reporting Is Needed*
- *Pilot Phase Study Results of a Prospective, Randomized Controlled Clinical Trial Evaluating Axillary Ultrasound vs Sentinel Lymph Node Biopsy for Axillary Staging in Early-Stage Breast Cancer Patients*
- *Sentinel Node Mapping with 99mTc-tilmanocept: Clinical Trial Results and Follow-Up Data Show Consistent Performance Across Studies and Tumor Types*
- *Association of Incision Type and Infection Rate in Nipple-Sparing Mastectomies A Preliminary Analysis of The American Society of Breast Surgeons Nipple Sparing Mastectomy Registry*
- *Once Is Rarely Enough: A Population-Based Study of Reoperations After Postmastectomy Breast Reconstruction*
- *Reframing Women's Risk: Counseling on Contralateral Prophylactic Mastectomy in Non-High-Risk Women with Early Breast Cancer*
- *The Relationship Between Year of Treatment and Local Recurrence (LR) of Ductal Carcinoma In Situ (DCIS): Analysis of 3000 Women Treated with Breast-Conserving Surgery Over 30 Years*
- *Modern Trends in the Surgical Management of Paget's Disease*
- *Resident and Fellow Participation in Breast Surgery: A NSQIP Clinical Outcomes Analysis*

Moderators: Steven Chen, MD
Sarah Blair, MD

Magdalena Plasilova, MD

Hannah Bansil, MD, MPH

Nimmi Kapoor, MD

Rubie Sue Jackson, MD, MPH

Amy Cyr, MD

Anne Wallace, MD

Sunny Mitchell, MD

Amanda Roberts, MD, MPH

Andrea Covelli, MD, PhD

Preeti Subhedar, MD

Stephanie Wong, MD

Abhishek Chatterjee, MD, MBA

1:45 pm–2:45 pm

Community Tumor Board

- ▶ Welcome and Introduction
- ▶ Radiology
- ▶ Medical Oncology
- ▶ Radiation Oncology
- ▶ Surgery
- ▶ Pathology
- ▶ Ethics
- ▶ Plastics

Moderator: Victor Zannis, MD

Victor Zannis, MD

Jules Sumkin, DO

Carey Anders, MD

Lawrence Solin, MD

Tari King, MD, Terry Mamounas, MD

Melissa Murray, DO

Alyssa Throckmorton, MD

Kenneth R. Lee, MD, FACS

2:45 pm–3:55 pm

Scientific Session Oral Presentations II

- *Competing Risks of Death in Older Women With Breast Cancer and Comorbidities*
- *Overall Survival, Disease-Free Survival and Nipple-Areolar Recurrence in the Setting of Nipple-Sparing Mastectomy: A Meta-Analysis*
- *Assessment of Practice Patterns Following Publication of the SSO-ASTRO Consensus Guidelines on Margins for Breast-Conserving Therapy with Whole-Breast Irradiation in Stage I and II Invasive Breast Cancer*
- *What's a Breast Surgeon Worth? A Salary Survey of The American Society of Breast Surgeons*
- *A Bio-Psychosocial Intervention Program for Improving Quality of Life in Breast Cancer Survivors—Results of a Prospective Randomized Trial*

Moderators: Judy Boughey, MD

Irene Wapnir, MD

Katherine Hansen, DO

Lucy De La Cruz, MD

Sarah DeSnyder, MD

Eric Manahan, MD

Janine Pettiford, MD

general session

SATURDAY/SUNDAY, May 2–3

Mediterranean Ballroom, JW Marriott, Lobby Level

SATURDAY, May 2 *continued*

3:55 pm–4:20 pm Break in Exhibit Hall, *Coquina Ballroom, JW Marriott, Lobby Level*

4:20 pm–6:00 pm **Contemporary Updates to Clinical Trials and Patient Management** Moderator: Helen Pass, MD

- ▶ Welcome and Introduction Helen Pass, MD
- ▶ Best of ASCO/SABCS Tari King, MD
- ▶ Pass's Best Papers Julie Margenthaler, MD
- ▶ Top 10 of the Last 10 Years Helen Pass, MD
- ▶ Active Trials Lee Wilke, MD
- ▶ Contemporary Challenges of Clinical Trial Design: Surgical Perspective Judy Boughey, MD

6:00 pm–7:30 pm **President's Reception, Valencia Terrace, JW Marriott, Lower Level**

SUNDAY, May 3

7:30 am–8:45 am **Heterogeneity of Breast Cancer** MOC Moderator: Pat Whitworth, MD

- ▶ Welcome and Introduction Pat Whitworth, MD
- ▶ Molecular Subtyping of DCIS Melissa Murray, DO
- ▶ Update on the Utility of Genomic Profiling Charles Cox, MD
- ▶ Breast Cancer Staging and Biomarkers Sanjay Bagaria, MD
- ▶ Vaccinations for Breast Cancer Elizabeth Mittendorf, MD
- ▶ Q&A

8:45 am–10:00 am **Benign Breast Disease** MOC Moderator: Rakhshanda Rahman, MD

- ▶ Welcome and Introduction Rakhshanda Rahman, MD
- ▶ Nipples Gone Bad Amanda Wheeler, MD
- ▶ Normal and Abnormal Findings in the Pregnant Patient Tricia Kelly, MD
- ▶ Phyllodes Tumors Andrea Barrio, MD
- ▶ Atypical Hyperplasia: Long-Term Risk and Implications Amy Degnim, MD
- ▶ Gynecomastia Linsey Gold, DO
- ▶ The Ambiguous Core Needle Biopsy Katherina Zabicki Calvillo, MD
- ▶ Q&A

10:00 am–11:30 am **Prophylactic Mastectomy** MOC Moderator: Virginia Herrmann, MD
and Tweet session Tweet Moderators: Joseph Contino, MD
Deanna Attai, MD

- ▶ Welcome and Introduction Virginia Herrmann, MD
- ▶ Is There a Survival Benefit to Surgery? Isabelle Bedrosian, MD
- ▶ Navigating Treatment Decisions with Patients Steven Katz, MD
- ▶ Ethics of Contralateral Prophylactic Mastectomy Peter Angelos, MD
- ▶ Mutations Beyond BRCA David Euhus, MD
- ▶ Patient Satisfaction After Prophylactic Mastectomy and Breast Reconstruction: The BREAST Q Andrea Pusic, MD, MHS
- ▶ Q&A

11:30 am

Adjourn

Thank you for joining us!

pre-meeting program & general session faculty

Jad Abdelsattar, MBBS

Mayo Clinic
Rochester, MN

Catherine L. Akay, MD

Assistant Professor
The University of Texas MD Anderson Cancer Center
Houston, TX

Jamila Al-Azhri, MD

Fellow, Breast Surgical Oncology
Department of Surgery
University of Miami Miller School of Medicine
General Surgeon
Department of Surgery
King Fahad Specialist Hospital
Miami, FL

Carey K. Anders, MD

Associate Professor of Medicine
Division of Hematology Oncology
University of North Carolina at Chapel Hill
Lineberger Comprehensive Cancer Center
Chapel Hill, NC

Peter Angelos, MD, PhD, FACS

Linda Kohler Anderson Professor of Surgery &
Surgical Ethics
Chief, Endocrine Surgery
Associate Director of the MacLean Center for
Clinical Medical Ethics
Chicago, IL

Deanna J. Attai, MD, FACS

Assistant Clinical Professor of Surgery
David Geffen School of Medicine
University of California Los Angeles
Burbank, CA

Sanjay P. Bagaria, MD, FACS

Assistant Professor of Surgery
Mayo Clinic
Jacksonville, FL

Lisa Bailey, MD, FACS

Medical Director, Carol Ann Read Breast
Health Center
Co-Director, Breast Program
QI Director, Cancer Program
Alta Bates Summit Medical Center
Oakland, CA

Hannah Bansil, MD, MPH

Breast Surgery Fellow
Columbia University Medical Center
New York, NY

Julie L. Barone, DO, FACS

Medical Director
Comprehensive Breast Care of Denver
Saint Joseph Hospital
Director, SCL Health Breast Services
Denver, CO

Andrea V. Barrio, MD, FACS

Assistant Attending, Breast Service
Memorial Sloan Kettering Cancer Center
New York, NY

Isabelle Bedrosian, MD, FACS

Associate Professor, Department of Surgical
Oncology, Division of Surgery
The University of Texas MD Anderson Cancer Center
Houston, TX

Jennifer R. Bellon, MD

Assistant Professor of Radiation Oncology
Department of Radiation Oncology
Dana-Farber Cancer Institute and Brigham and
Women's Hospital
Harvard Medical School
Boston, MA

Michael P. Berry, MD, FACS

Director, The West Clinic Comprehensive
Breast Center
Clinical Assistant Professor, Department of Surgery
University of Tennessee College of Medicine
Germantown, TN

Sarah Blair, MD, FACS

Professor of Surgery
University of California San Diego Department
of Surgery
La Jolla, CA

Richard J. Bleicher, MD, FACS

Breast Service Line Leader
Director, Breast Fellowship Program
Associate Professor, Department of Surgical Oncology
Fox Chase Cancer Center
Philadelphia, PA

Susan K. Boolbol, MD, FACS

Chief, Division of Breast Surgery
Chief, Appel-Venet Comprehensive Breast Service
Co-Director, Breast Surgery Fellowship
Mount Sinai Beth Israel
Associate Professor of Surgery
Icahn School of Medicine at Mount Sinai
New York, NY

Judy C. Boughey, MD, FACS

Professor of Surgery
Mayo Clinic
Rochester, MN

David R. Brenin, MD, FACS

Surgical Specialist, Oncology Specialist
University of Virginia Health Sciences Center
Charlottesville, VA

William E. Burak, MD, FACS

Professor of Surgery
Mercer University School of Medicine
Director, Breast Oncology
Memorial University Health System
Savannah, GA

Katherina Zabicki Calvillo, MD, FACS

Department of Surgery
Brigham and Women's Hospital
Dana Farber Cancer Institute
Harvard Medical School
Boston, MA

Jodi M. Carter, MD, PhD

Assistant Professor
College of Medicine
Senior Associate Consultant
Department of Laboratory Medicine and Pathology
Mayo Clinic
Rochester, MN

Abhishek Chatterjee, MD, MBA

Breast Surgical Oncology Fellow
University of Pennsylvania
Philadelphia, PA

Steven L. Chen, MD, MBA, FACS

Director of Surgical Oncology
OasisMD
San Diego, CA

Krishna B. Clough, MD

Director
L'Institut du Sein – Paris Breast Centre
Paris, France

Costanza Cocilovo, MD, FACS

Medical Director
Inova Breast Care Institute
Medical Director, Breast Care
Inova Fairfax Hospital
Fairfax, VA

Hiram (Chip) S. Cody, III, MD, FACS

Attending Surgeon, Breast Service,
Department of Surgery
Memorial Sloan-Kettering Cancer Center
Professor of Clinical Surgery
Weill Cornell Medical College
New York, NY

Joseph P. Contino, MD, FACS

Breast Surgeon
Comprehensive Cancer Centers of Nevada
Las Vegas, NV

Andrea Covelli, MD, PhD

Division of General Surgery
University of Toronto
Toronto, Canada

Michael S. Cowher, MD

Quality Assurance Director, Breast Surgical Oncology
Co-Fellowship Director, Breast Surgical Oncology
Allegheny Health Network
Pittsburgh, PA

Charles E. Cox, MD, FACS

McCann Foundation Endowed Professor
of Breast Surgery
University of South Florida College of Medicine
Director of Breast Services
Florida Hospital - Tampa
Tampa, FL

Lisa D. Curcio, MD, FACS

Director, Breast Link
Breast Link – Laguna Hills
Laguna, CA

Amy Cyr, MD, FACS

Assistant Professor of Surgery
Washington University St. Louis
St. Louis, MO

Brian J. Czerniecki, MD, PhD, FACS

Rhoades-Harrington Professor of Surgical Oncology
Hospital of the University of PA
Co-Director of the Rena Rowan Breast Center
Abramson Cancer Center
Philadelphia, PA

Lucy De La Cruz, MD

General Surgery
University of Miami Miller School of Medicine
Miami, FL

Amy C. Degnim, MD, FACS

Professor of Surgery
Mayo Clinic
Rochester, MN

Lynn T. Dengel, MD

Breast Surgeon
Virginia Breast Care, PLC
Martha Jefferson Hospital
Charlottesville, VA

Sarah DeSnyder, MD

Assistant Professor
The University of Texas MD Anderson Cancer Center
Houston, TX

Diana Dickson-Witmer, MD, FACS

Medical Director, Christiana Care Breast Center
Helen F. Graham Cancer Center and
Research Institute
Newark, DE

Jill Dietz, MD, FACS

Director, Breast Center Operations
Surgical Oncology
Department of Surgery
University Hospitals Case Medical Center
Cleveland, OH

Beth DuPree, MD, FACS, ABIHM

Medical Director Integrative and Holistic Medicine
Department of Surgery Chair
Holy Redeemer Health System
Adjunct Assistant Professor of Surgery
University of Pennsylvania
Southampton, PA

Brandy Edwards, MD

General Surgery Resident
University of Virginia
Charlottesville, VA

Thomas L. Eisenhauer, MD, FACS

Breast Surgeon
Pardee Surgical Associates
Henderson, NC

Souzan E. El-Eid, MD, FACS

Director, The Breast Center at Summerlin Hospital
Touro University Adjunct Professor
Breast Surgical Oncology, CCCN
US Oncology
Las Vegas, NV

David M. Euhus, MD, FACS

Chief, Breast Surgery Section
Johns Hopkins Hospital
Baltimore, MD

Richard E. Fine, MD, FACS

Director of Education and Research
The West Clinic Comprehensive Breast Center
Clinical Associate Professor
Department of Surgery, University of Tennessee
Germantown, TN

Meghan Flanagan, MD

General Surgery Resident
University of Washington
Seattle, WA

Thomas G. Frazier, MD, FACS

Medical Director
Barbara Brodsky Comprehensive Breast Center,
Bryn Mawr Hospital
Clinical Professor of Surgery
Thomas Jefferson University, School of Medicine
Bryn Mawr, PA

Sara J. Fredrickson, MD, FACS

Breast Surgeon
Cadence Health
Bloomingtondale, IL

Mary Gemignani, MD, FACS

Director, Breast Surgical Fellowship
Memorial Sloan Kettering Cancer Center
New York, NY

Mark A. Gittleman, MD, FACS

Medical Director, Breast Services
Coordinated Health Network
Allentown, PA

Linsey P. Gold, DO, FACOS, FACS

Clinical Director
Michigan Center for Breast Health
Flint, MI

Ross F. Goldberg, MD, FACS

Chief of Surgery
Chief, Division of General Surgery
Maricopa Integrated Health System
Assistant Professor of Surgery
University of Arizona College of Medicine – Phoenix
Phoenix, AZ

Mehra Golshan, MD, FACS

Director, Breast Surgical Services
Dana Farber/Brigham and Women's Cancer Center
Dr. Abdul Moshen and Sultana Chair in Surgical
Oncology
Brigham and Women's Hospital
Associate Professor of Surgery
Harvard Medical School
Boston, MA

Ian P. Grady, MD, FACS

Assistant Clinical Professor
University of California, Davis
Redding, CA

Richard Gray, MD, FACS

Consultant, Section of Surgical Oncology
Program Director, General Surgery Residency
Associate Professor of Surgery
Mayo Clinic College of Medicine
Scottsdale, AZ

Stephen R. Grobmyer, MD, FACS

Professor of Surgery
Lerner College of Medicine
Director, Section Head of Surgical Oncology
Director, Breast Center
Cleveland Clinic
Cleveland, OH

pre-meeting program & general session faculty

Joy Larsen Haidle, MS, CGC

Genetic Counselor
Humphrey Cancer Center
President, National Society of Genetic Counselors
Chicago, IL

Linda Han, MD, FACS

Director, Breast Surgical Oncology
Indiana University Health Simon Cancer Center
Professor of Clinical Surgery
Indiana University School of Medicine
Indianapolis, IN

Katherine Hansen, DO

Breast Fellow
Clinical Instructor
Fox Chase Cancer Center
Philadelphia, PA

Sarah T. Hawley, PhD, MPH

Associate Professor, Departments of Internal
Medicine and School of Public Health
University of Michigan
Research Scientist, VA Center for Clinical
Management Research
Ann Arbor VA HSR&D Center of Innovation
Ann Arbor, MI

John Heineman, MD, MPH

Department of Surgery, PGY2
University of Iowa Hospitals and Clinics
Iowa City, IA

C. Alan Henry, MD, MBA, FACS

Associate Medical Director
MedSolutions, Inc
Franklin, TN

Ronda Henry-Tillman, MD, FACS

Professor of Surgery, College of Medicine
Division of Breast Oncology
University of Arkansas for Medical Sciences
Little Rock, AR

Virginia M. Herrmann, MD, FACS

Professor of Surgery
Washington University
St Louis, MO

Tina J. Hieken, MD, FACS

Associate Professor of Surgery
Mayo Clinic
Rochester, MN

Dennis R. Holmes, MD, FACS

Director, Los Angeles Center for
Women's Health
California Hospital Medical Center
Los Angeles, CA

Clifford Hudis, MD

Chief, Breast Cancer Medicine Service
Attending Physician
Memorial Sloan-Kettering Cancer Center
Professor of Medicine
Weill Cornell Medical College
New York, NY

E. Shelley Hwang, MD, MPH, FACS

Chief, Breast Surgical Oncology
Professor of Surgery
Duke Comprehensive Cancer Center
Durham, NC

Claudine Isaacs, MD

Co-Director, Breast Cancer Program
Medical Director, Fisher Center for
Familial Cancer Research
Professor of Medicine
Georgetown Lombardi Comprehensive
Cancer Center
Washington, DC

Rubie Sue Jackson, MD

Breast Surgical Oncology Fellow
Anne Arundel Medical Center
Annapolis, MD

James Jakub, MD, FACS

Section Head, Breast and Melanoma Surgery
Department of Surgery
Mayo Clinic
Rochester, MN

Sara H. Javid, MD, FACS

Assistant Professor, Department of Surgery
University of Washington Seattle
Cancer Care Alliance
Seattle, WA

Maxine Jochelson, MD

Director of Radiology Breast and Imaging Center
Memorial Sloan Kettering Cancer Center
Associate Professor of Clinical Radiology
Weill Cornell Medical School
New York, NY

Glyn E. Jones, MD

Plastic and Cosmetic Surgeon
Illinois Medical Center
Peoria, IL

Nimmi Kapoor, MD

Breast Surgical Oncologist
Breastlink
Orange, CA

Scott R. Karlan, MD, FACS

Director of Physician Education
Saul and Joyce Brandman Breast Center
Los Angeles, CA

Steven J. Katz, MD, MPH

Professor, Departments of Medicine and Health
Management and Policy
University of Michigan
Ann Arbor, MI

Cary S. Kaufman, MD, FACS

Associate Clinical Professor of Surgery
Bellingham Breast Center
Bellingham, WA

David I. Kaufman, MD, FACS

Chief of Breast Surgery
St Joseph Hospital
Bethpage, New York
Assistant Professor of Surgery
Hofstra North Shore, LIJ School of Medicine
Hempstead, NY
Director, Breast Care Specialists
Bethpage, NY

Gabriel J. Kaufman, MD

Oncoplastic Faculty
Hackensack University Medical Center
Hackensack, NJ

Tricia A. Kelly, MD, FACS

Breast Surgeon
Cancer Care Associates
Allentown, PA

John S. Kennedy, MD, FACS

Breast Surgeon
DeKalb Surgical Associates
Decatur, GA

John V. Kiluk, MD, FACS

Associate Member, Comprehensive Breast Program
H. Lee Moffitt Cancer Center & Research Institute
Tampa, FL

Tari A. King, MD, FACS

Deputy Chief and Director of Research, Breast Service
Department of Surgery, Memorial Sloan Kettering
Cancer Center
Associate Professor of Surgery
Weill Medical College of Cornell
New York, NY

V. Suzanne Klimberg, MD, FACS

Muriel Balsam Kohn Chair in Breast Surgical Oncology
Professor of Surgery and Pathology
University of Arkansas for Medical Sciences
Director, Breast Cancer Program
Winthrop P. Rockefeller Cancer Institute
Little Rock, AR

Henry M. Kuerer, MD, PhD, FACS

Professor and Medical Director
MD Anderson Cancer Network
Director, Breast Surgical Oncology Training Program
University of Texas MD Anderson Cancer Center
Houston, TX

Alison L. Laidley, MD, FACS, FRCS

Texas Breast Specialists
Texas Oncology
Dallas, TX

Jeffrey Landercasper, MD, FACS

Breast Program Leader
Gundersen Health Systems
Clinical Associate Professor
Department of Surgery
University of Wisconsin School of Public Health
and Medicine
La Crosse, WI

Kenneth R. Lee, MD, FACS

Plastic & Reconstructive Surgery
Institute of Microsurgery
Assistant Professor of Plastic Surgery
University of Central Florida
Assistant Professor of Surgery
Florida State University
Clinical Affiliate of Plastic Surgery
Nova Southeastern University
UF Cancer Center - Orlando Health
Orlando, FL

Marie Catherine Lee, MD, FACS

Associate Member
Comprehensive Breast Program
Moffitt Cancer Center
Tampa, FL

Erik Liederbach, BS

Research Fellow
Northshore University Health System
Evanston, IL

Jennifer K. Litton, MD

Department of Breast Medical Oncology
The University of Texas MD Anderson Cancer Center
Houston, TX

Minetta C. Liu, MD

Research Chair, Division of Medical Oncology
Associate Professor
Department of Oncology
Department of Laboratory Medicine and Pathology
Mayo Clinic
Rochester, MN

Raphael Louie, MD, MPH

Resident Physician
Dartmouth-Hitchcock Medical Center
Lebanon, NH

Terry Mamounas, MD, MPH

Medical Director, Comprehensive Breast Program
University of Florida Health Cancer Center -
Orlando Health
Professor of Surgery
University of Central Florida
Professor of Clinical Services
Florida State University
Orlando, FL

Eric R. Manahan, MD, MBA, FACS

Medical Director
Southeastern Breast Care Specialists
Dalton, GA

Julie A. Margenthaler, MD, FACS

Associate Professor
Division of General Surgery
Endocrine and Oncologic Surgery
Center for Advanced Medicine
St Louis, MO

Michelle McDonough, MD

Assistant Professor of Radiology
Section Chief, Breast Imaging
Mayo Clinic Florida
Jacksonville, FL

Sarah A. McLaughlin, MD, FACS

Associate Professor of Surgery
Section of Clinical Oncology
Program Director
General Surgery Residency
Mayo Clinic
Jacksonville, FL

Jane E. Mendez, MD, FACS

Associate Professor of Surgery
Surgical Oncology, Breast Surgery
Boston University School of Medicine
Boston, MA

Funda Meric-Bernstam, MD, FACS

Professor, Division of Cancer Medicine and Surgery
Chair, Department of Investigational
Cancer Therapeutics
Medical Director, Institute for Personalized Cancer
Therapy
Nellie B. Connally Chair in Breast Cancer
Breast Cancer Research
Houston, TX

Sunny D. Mitchell, MD

Chair, Scientific Advisory Committee Nipple
Sparing Mastectomy
The American Society of Breast Surgeons
Director of Breast Surgery
White Plains Hospital
Clinical Instructor of Surgery
Columbia University College of Physicians & Surgeons
Rye Brook, NY

Elizabeth A. Mittendorf, MD, PhD, FACS

Associate Professor and Deputy Chair, Research,
Department of Surgical Oncology
University of Texas MD Anderson Cancer Center
Houston, TX

Monica Morrow, MD, FACS

Chief, Breast Service
Burnett Windfohr Chair of Clinical Oncology
Professor of Surgery
Memorial Sloan Kettering Cancer Center
Professor of Surgery, Weill Cornell
Medical College
Weill Medical College of Cornell University
New York, NY

Brittany Murphy, MD

General Surgery Resident
Mayo Clinic
Rochester, MN

Melissa P. Murray, DO

Assistant Attending
Memorial Sloan Kettering Cancer Center
New York, NY

Kevin Nelson, PhD, CHP

Medical Health Physicist and RSO
Mayo Clinic - Arizona
Scottsdale, AZ

David W. Ollila, MD, FACS

James and Jesse Millis Distinguished Professor of
Surgery
University of North Carolina at Chapel Hill School
of Medicine
Associate Director
North Carolina Cancer Hospital, UNC Hospitals
Co-Director, Breast Program
UNC Lineberger Comprehensive Cancer Center
Chapel Hill, NC

Frank Opelka, MD, FACS

Medical Director of Quality and Health Policy
American College of Surgeons
Executive Vice President of Health Care and
Medical Education Redesign
LSU System
Washington, DC

Ann H. Partridge, MD, MPH

Director, Adult Survivorship Program
Dana-Farber Cancer Institute
Associate Professor of Medicine
Harvard Medical School
Boston, MA

pre-meeting program & general session faculty

Helen A. Pass, MD, FACS

Director, Division of Breast Surgery
Co-Director of the Women's Breast Center
Stamford Hospital
Stamford, CT

Catherine Pesce, MD

Clinical Assistant Professor
University of Chicago Pritzker School of Medicine
Co-Director
Highland Park Hospital Breast Program
Evanston, IL

Jean Yves Petit, MD

Division of Plastic Surgery
European Institute of Oncology
Milan, Italy

Janine Pettiford, MD

Breast Surgeon
Texas Tech University Health Sciences
Amarillo, TX
Surgical Breast Oncologist
Southern Regional Medical Center
Fayetteville, GA

Melissa Pilewskie, MD

Assistant Attending, Department of Surgery
Memorial Sloan-Kettering Cancer Center
New York, NY

Magdalena Plasilova

General Surgery Resident
Danbury Hospital
Danbury, CT

Barbara A. Pockaj, MD, FACS

Michael M. Eisenberg Professor of Surgery
Mayo Clinic
Phoenix, AZ

Sandhya Pruthi, MD

Associate Professor of Medicine
Mayo Clinic
Rochester, MN

Andrea Pusic, MD, MHS, FACS

Associate Attending Surgeon
Memorial Sloan Kettering Cancer Center
Associate Professor of Surgery (Plastics)
Weill Medical College of Cornell University
New York, NY

Diane M. Radford, MD, FACS, FRCSEd

Breast Surgical Oncologist
Mercy Clinic St. Louis
St. Louis, MO

Rakhshanda Layeequr Rahman, MD, FRCS, FACS

Professor, Surgical Oncology
Director, Breast Center of Excellence
Texas Tech University Health Sciences Center
Amarillo, TX

P. Raghu Ram, MS, FRCS(Edin), FRCS(Eng),

FRCS(Glasg), FRCS(Irel), FACS
President Elect
The Association of Breast Surgeons of India
Director & Consultant Oncoplastic Breast Surgeon
KIMS-USHALAKSHMI Centre for Breast Diseases
CEO & Director
Ushalakshmi Breast Cancer Foundation
Telangana, India

Roshni Rao, MD, FACS

Associate Professor of Surgery, Division of Surgical
Oncology
UT Southwestern Medical Center
Director, George N Peters Center for Breast Care
Chief of Staff, Zale Hospital
Zale Lipshy University Hospital
Dallas, TX

Amanda Roberts, MD, MPH, FRCSC

Clinical Research Fellow
University Health Network
University of Toronto
Ontario, Canada

Chad A. Rubin, MD, FACS

Delegate Representing General Surgery
AMA Relative Value Committee (RUC)
Columbia, SC

Kathryn J. Ruddy, MD, MPH

Director of Cancer Survivorship, Department of
Oncology
Mayo Clinic
Rochester, MN

Emiel J.T. Rutgers, MD, PhD

Head of the Department of Surgery
Netherlands Cancer Institute
Professor in Surgical Oncology
University of Amsterdam
Amsterdam, Netherlands

Nirav Savalia, MD

Clinical Assistant Professor
University of Southern California, Keck School of
Medicine
Clinical Assistant Professor
University of California, Irvine
Newport Beach, CA

Randall P. Scheri, MD, FACS

Surgical Oncologist
Duke University Medical Center
Durham, NC

Freya R. Schnabel, MD, FACS

Director of Breast Surgery
NYU Langone Medical Center
Perlmutter Cancer Center
New York, NY

Theresa Schwartz, MD, MS, FACS

Assistant Professor of Surgery
Department of General Surgery
Breast Surgical Oncology
St Louis, MO

Mikki Seagren, DO

Breast Surgical Oncology Fellow
University of California, San Francisco
San Francisco, CA

Christian Shalgian

Division Director
Division of Advocacy and Health Policy
American College of Surgeons
Washington, DC

Robin B. Shermis, MD, MPH, FACP

Medical Director
ProMedica Breast Care
Toledo, OH

Melvin J. Silverstein, MD, FACS

Gross Family Foundation Endowed Chair
in Oncoplastic Surgery
Director, Breast Program
Hoag Memorial Hospital
Newport Beach, CA
Clinical Professor of Surgery
Keck School of Medicine
University of Southern California
Los Angeles, CA

Linda A. Smith, MD, FACS

Breast Surgeon
Presbyterian Kaseman Hospital
Breast Surgeon
Lovelace Womens Hospital
Breast Surgeon
University of New Mexico Hospital
Albuquerque, NM

Howard C. Snider, Jr, MD, FACS

Breast Surgeon
Alabama Surgical Consultants
Montgomery, AL

Lawrence J. Solin, MD, FACP, FASTRO

Chairman
Department of Radiation Oncology
Albert Einstein Healthcare Network
Philadelphia, PA

Angela M. Soto-Hamlin, MD, FACS

Assistant Professor of Surgery
Division of General Surgery Specialties and
Surgical Oncology
Mechanicsburg, PA

Alicia Staley

Patient Advocate
Breast Cancer Survivor
Boston, MA

Edgar D. Staren, MD, PhD, MBA, FACS

Clinical Professor
Translational Genomics Research Institute (TGen)
Phoenix, AZ

Preeti Subhedar, MD

Clinical Breast Surgical Oncology Fellow
Memorial Sloan Kettering Cancer Center
New York, NY

Jules H. Sumkin, DO, FACP

Professor and Chairman, Department of Radiology
UPMC Endowed Chair for Women's Imaging
University of Pittsburgh Medical Center (UPMC)
Pittsburgh, PA

C. Alden Sweatman, MD, FACS

Breast Surgeon
Columbia, SC

Lorraine Tafra, MD, FACS

Medical Director, AAMC Breast Center
Anne Arundel Medical Center
Annapolis, MD

Walton A. Taylor, MD, FACS

Director
True Surgical Partners
Dallas, TX

Alicia Terando, MD, FACS

Assistant Professor - Clinical, Surgical Oncology
The Ohio State University
Columbus, OH

Carrie A. Thoms, MD, FACS

Breast Surgeon
Prevea Health
Green Bay, WI

Alyssa D. Throckmorton, MD, FACS

Breast Surgeon and Breast Disease
Specific Group, Chair
Baptist Cancer Center
Assistant Professor
University of Tennessee
Memphis, TN

Judy A. Tjoe, MD, FACS

Medical Director
Aurora Health Care
Milwaukee, WI

Eleni A. Tousimis, MD, FACS

Breast Center Director
Lombardi Cancer Center
Chief, Breast Surgery
MedStar Georgetown University Hospital
Washington, DC

Dariush Vaziri, MD, FACS

Breast Surgeon
Vero Beach, FL

Marie Jeanne Vrancken Peeters, MD, PhD

Surgical Oncologist
Antoni van Leeuwenhoek Hospital
Netherlands Cancer Institute
Amsterdam, Netherlands

Kathryn A. Wagner, MD, FACS

Breast Surgeon
Cancer Care Centers of South Texas
San Antonio, TX

Anne Wallace, MD, FACS

Director, University of California, San Diego
Comprehensive Breast Center
La Jolla, CA

Irene L. Wapnir, MD, FACS

Professor of Surgery
Stanford Cancer Institute
Chief of Breast Surgery
Stanford University School of Medicine
Stanford, CA

Amanda J. Wheeler, MD, FACS

Women's Cancer Center
Stanford University Hospital and Clinics
Palo Alto, CA

Pat W. Whitworth, MD, FACS, FSSO

Director, Nashville Breast Center
Nashville, TN

Lee G. Wilke, MD, FACS

Professor of Clinical Surgery
Director, University of Wisconsin
Breast Center
WARF Professor for the Advancement of Surgery
Madison, WI

Shawna C. Willey, MD, FACS

Professor of Clinical Surgery
Director, MedStar Regional Breast
Health Program
Vice-Chair, Department of Surgery
MedStar Georgetown University Hospital
Washington, DC

Eric P. Winer, MD

Chief, Division of Women's Cancers
Thompson Chair in Breast Center
Dana-Farber Cancer Institute
Professor of Medicine
Harvard Medical School
Boston, MA

Stephanie Wong, MD

MPH Candidate, Harvard School of Public Health
Research Trainee
Dana-Farber/Brigham and Women's Hospital
Boston, MA
General Surgery Resident
McGill University Health Centre
Montreal, Canada

Zachary T. Young, MD

General Surgery Resident
University of Arkansas for Medical Sciences
Central Arkansas Veterans Healthcare System
John L. McClellan Memorial Veterans Hospital
Little Rock, AR

Victor J. Zannis, MD, FACS

Medical Director
Comprehensive Breast Center of Arizona -
Greenway
Phoenix, AZ

16th Annual Meeting

commercial exhibits and supporters

Visit the industry's top vendors in the Exhibit Hall located in the Coquina Ballroom. Exhibitors will showcase the latest technology and the newest procedures. You will be able to meet with company representatives and see this technology first-hand.

The American Society of Breast Surgeons gratefully acknowledges the unrestricted educational grants, marketing support, and gifts in kind received from the following companies and thanks them for helping the Society continue its mission of encouraging the study of breast surgery, promoting research and development of advanced surgical techniques, improving the standards of practice for breast surgery in the United States, and serving as a forum for the exchange of ideas.

Exhibit Hall Hours

*Coquina Ballroom, JW Marriott,
Lobby Level*

Opening Reception:

Thursday, April 307:30 pm–9:00 pm

Friday, May 19:00 am–4:30 pm

Saturday, May 29:00 am–4:30 pm

Educational Grants/Gifts in Kind

Bard Biopsy Systems
Best Medical
B-K Ultrasound
Carl Zeiss Meditec, Inc.
Cianna Medical
Cokiya
Dilon Technologies
Dune Medical Devices, Inc.
Faxitron Bioptics, LLC
Genentech, Inc.
Hitachi Aloka Medical
Hologic, Inc.
IceCure Medical, Inc.
ImpediMed, Inc.
IntraMedical Imaging, LLC

IsoAid
Kubtec
Mammotome
Myriad Genetic Laboratories, Inc.
NanoString Technologies
Sanarus Technologies
Terason Corporation
United Medical Systems, Inc.
Xoft, a subsidiary of iCAD, Inc.

Marketing Support

Ambry Genetics, Inc.
BFFL CO, LLC
CareFusion
Cianna Medical
Genentech, Inc.
Genomic Health, Inc.
Hologic, Inc.
ImpediMed, Inc.
Invuity, Inc.
Mammotome
Medtronic
Myriad Genetic Laboratories, Inc.
Pacira Pharmaceuticals, Inc.
Progeny Genetics, LLC
Xoft, a subsidiary of iCAD, Inc.

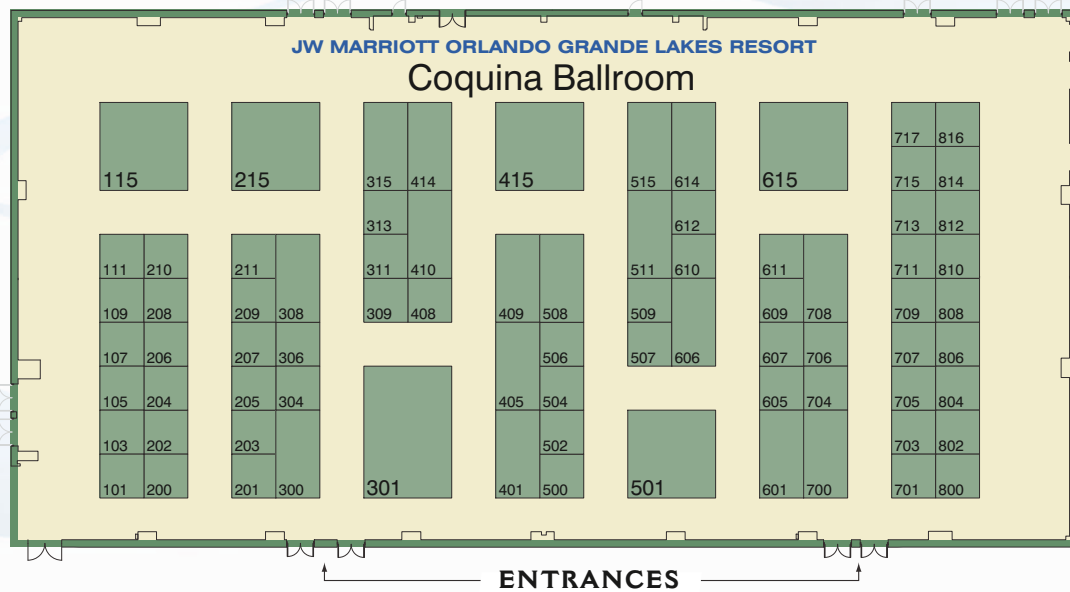


See you next year!



16th Annual Meeting

Exhibit Hall

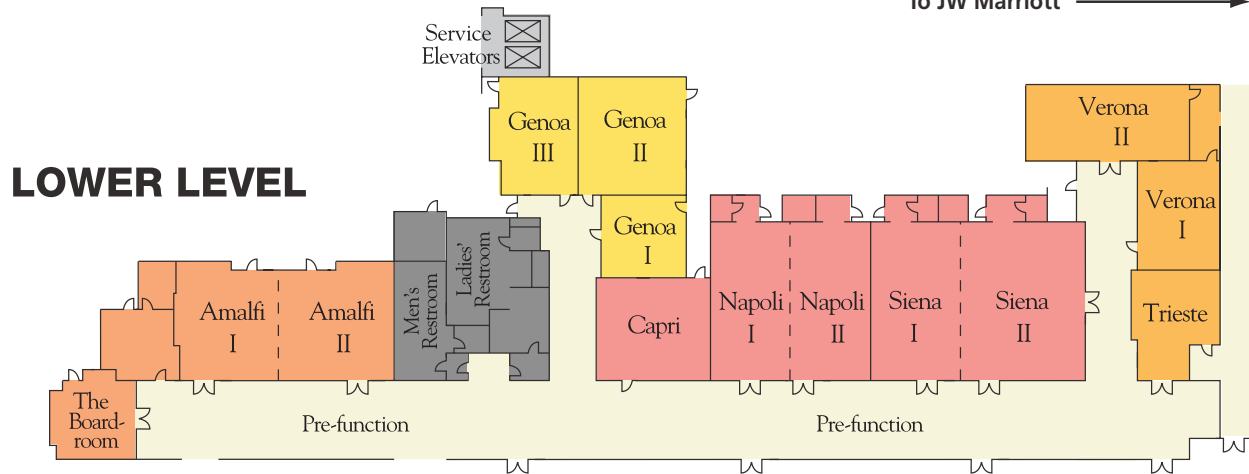


List of Exhibitors

<u>Company Name</u>	<u>Booth No.</u>	<u>Company Name</u>	<u>Booth No.</u>	<u>Company Name</u>	<u>Booth No.</u>
21st Century Oncology	203	EduCare Inc.	306	Memorial Healthcare System	209
Acelity/KCI	610	Endomagetics	101	Mentor Worldwide LLC	207
Agendia, Inc.	511	Engineered Medical Solutions	707	Meridian Health	711
Allergan	408	Enova Illumination	206	Mindray North America	202
Alps South	200	Faxitron	414	Myriad Genetic Laboratories, Inc.	415
Ambry Genetics	502	Focal Therapeutics	508	NanoString Technologies, Inc.	717
Applied Medical	713	Gamma Medica, Inc.	313	National Accreditation Program for Breast Centers	802
Atossa Genetics	814	Genentech	201	Navidea Biopharmaceuticals	605
Bard Biopsy Systems	501	GE Healthcare	208	OncoPlex Diagnostics	704
Baxter BioSurgery	806	Halyard Health	405	Pacira Pharmaceuticals, Inc.	111
Best Medical	211	HealthBreeze	810	Pacira Pharmaceuticals, Inc.	611
bioTheranostics, Inc.	204	Hitachi Aloka Medical	409	Pharmalucence	506
B-K Ultrasound	701	Hologic	301	Progeny Genetics, LLC	706
Black&Black Surgical	607	IceCure Medical, Inc.	609	Quest Diagnostics	614
B-Line Medical	612	ImpediMed, Inc.	300	Sanarus Technologies	410
Buffalo Filter	304	Infinite Therapeutics	816	SonoCiné AWBUS™	500
CareFusion	311	IntraMedical Imaging	205	TeleMammography Specialists, LLC	800
Caris Life Sciences	705	IntraOp Medical, Inc.	715	Terason	708
Carl Zeiss Meditec, Inc.	700	Invitae	703	The Healing Consciousness Foundation	109
Cianna Medical	401	Invuity	615	The US Oncology Network	504
CMR Naviscan Corporation	309	IsoAid	105	Tractus Corporation	103
Cokiya Inc.	210	Kubtec	515	United Medical Systems	507
Covidien	804	Lightpoint Medical	709	Vector Surgical	601
Cura Surgical	107	Mammotome	115	Wolters Kluwer Health	812
Dilon Technologies	509	Medtronic	606	Xoft, a subsidiary of iCAD, Inc.	308
Dune Medical Devices	215				



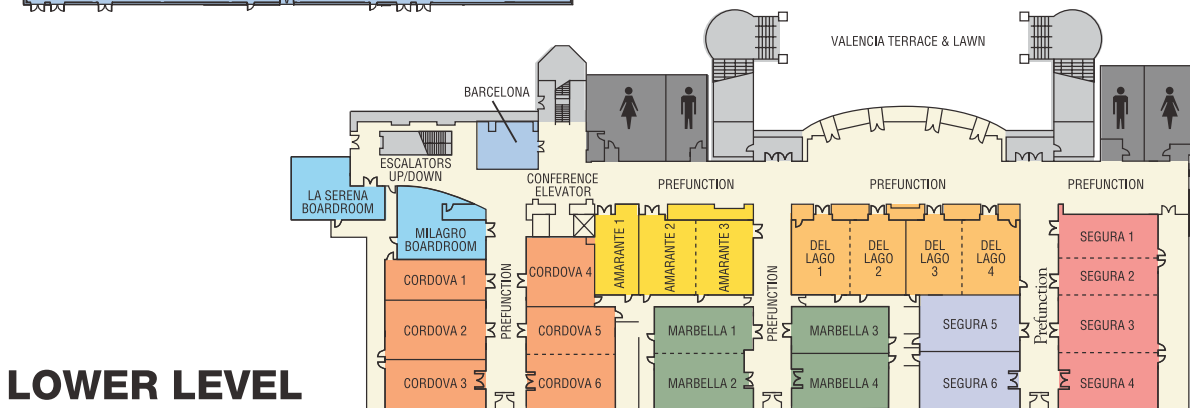
To JW Marriott →



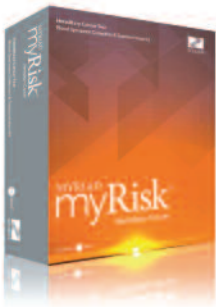
Da Vinci Terrace & Lawn



THE AMERICAN SOCIETY OF BREAST SURGEONS
ORLANDO GRANDE LAKES
 16TH ANNUAL MEETING
 April 29 - May 3, 2015



JW MARRIOTT ORLANDO GRANDE LAKES RESORT



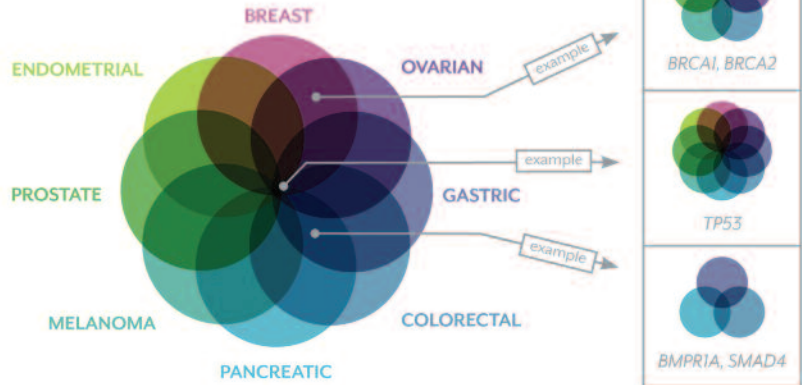
Introducing the Myriad myRisk™ Hereditary Cancer Panel

Myriad myRisk™ Evaluates 25 Clinically Significant Genes Associated with 8 Cancer Sites

Myriad Genetic Laboratories, Inc. has combined its unparalleled experience as the industry leader in the field of hereditary cancer testing with innovative technologies to develop and successfully implement a novel approach to hereditary cancer risk assessment.

The Myriad myRisk Hereditary Cancer test is a 25-gene panel for the identification of clinically significant mutations impacting inherited risks for eight important cancer sites.

Myriad's experience, with over one million patients tested, has led to the optimization and unparalleled accuracy of the hereditary cancer tests they offer. Myriad believes that the single most important factor in hereditary cancer prevention is an accurate test result because accurate results lead to a greater sense of security and more appropriate patient management.



Genes	Breast	Ovarian	Colorectal	Endometrial	Melanoma	Pancreatic	Gastric	Prostate	Other
BRCA1, BRCA2	●	●			●	●		●	
MLH1, MSH2, MSH6, PMS2, EPCAM		●	●	●		●	●		●
STK11	●	●	●	●		●	●		●
APC, BMP1A, SMAD4			●			●	●		●
MUTYH			●						●
CDKN2A, CDK4					●	●			
TP53	●	●	●	●	●	●	●	●	●
PTEN	●		●	●					●
CDHI	●		●				●		
PALB2, ATM	●					●			
CHEK2	●		●					●	
NBN	●							●	
BARD1	●								
BRIPI, RADS1C	●	●							
RADS1D		●							

- 40-50% More Mutations Identified^{1,2}
- >99.9% Validated Analytical Sensitivity³
- >99% Certainty for Variant Reclassification with Myriad's myVision™⁴
- **Medical Management** Guidelines from NCCN and Others
- 14-21 Day Turnaround Time
- 20+ Years of Experience
- **Best-in-Class** Patient, Provider and Financial Support
- **Lifetime** Commitment to Patients and Advancing Research
- **Most Appropriate** Patients Pay \$0

For more information come by the Myriad booth #415 or visit www.MyriadPro.com

1. Prevalence of Gene Mutations Among Hereditary Breast and Ovarian Cancer Patients Using a 25 Gene Panel, Nadine Tung et al. Presented at ACMG in March 2014
 2. Multi-gene panel testing in patients suspected to have Lynch syndrome, Matthew B. Yurgelun et al. Presented at ASCO June 2014
 3. Roa B., Bowles K., Bhatnagar S., Natalia G., Murray A., Wardell B., Baatian M., Mitchell J., Chen J., Tian T., Williams D., Potter J., Jammulapati S., Pany M., Morris B., Timms K. Development of next generation sequencing panel to assess hereditary cancer risk that includes clinical diagnostic analysis of the BRCA1 and BRCA2 genes. ASHG 2013.
 4. Bowles K., Morris S., Hughes E., Egginton J., Eslerling L., Robinson B., van Kan A., Roa B., Rosenthal E., Gutin A., Wenstrup R., Pruss D. A clinical history weighting algorithm accurately classifies BRCA1 and BRCA2 variants. ACMG 2013.



Myriad, the Myriad logo, Myriad myRisk, the Myriad myRisk logo, MyriadPro and the MyriadPro logo are either trademarks or registered trademarks of Myriad Genetics, Inc. in the United States and other jurisdictions.
 ©2015, Myriad Genetic Laboratories, Inc.