

THE AMERICAN SOCIETY OF BREAST SURGEONS

Dallas, Texas

20TH ANNUAL MEETING

April 30–May 5, 2019



PROGRAM

Program Chair

Dennis R. Holmes, MD, FACS
John Wayne Cancer Institute
Santa Monica, CA

Pre-Meeting Courses

April 30–May 2

General Session

May 2–5



THE AMERICAN SOCIETY OF BREAST SURGEONS
LEAD — Leadership, Education, Advocacy, Dedication



Helping answer
the most pressing
questions for patients
with breast cancer.



Myriad myRisk® Hereditary Cancer is a 35-gene panel that helps to determine your cancer risk by evaluating a number of hereditary cancer syndromes. myRisk offers accurate, affordable, and accessible testing.

Learn more at MyriadmyRisk.com

EndoPredict® is a genomic test for women with ER+/HER2-, early-stage breast cancer and provides three results you and your physician can use when determining the treatments that are right for you.

Learn more at EndoPredict.com





Welcome to the Hilton Anatole in Dallas!



Dear Colleagues,

On behalf of our Society president Dr. Walton Taylor, the board of directors, and the annual meeting committee, I welcome you to the 20th Annual Meeting of The American Society of Breast Surgeons.

We are excited to share a great program that we have planned for you. The overarching goal of this year's meeting is to prepare our members to be comprehensive breast care physicians of the future, which includes an emphasis on treatment innovation. We assume that you are already practicing the "standard of care." This year, we are committed to helping you elevate that "standard of care" in our never-ending effort to improve the efficacy, safety, and quality of breast care for our patients.

General Session

I am delighted to announce that we will be welcoming, as our keynote speaker, Academy Award-winning actress and lymphedema advocate Kathy Bates, who will highlight the Society's increased focus on breast cancer-related lymphedema, including our inaugural pre-meeting course and cadaver lab on Surgical Prevention and Management of Lymphedema.

As part of our emphasis on surgical innovation, this year's meeting will reprise the John Wayne Cancer Institute's critical issues in breast cancer forum, which will feature the latest trials of cryoablation, robotic nipple-sparing mastectomy, and intraoperative radiotherapy. Furthermore, the first annual Hoag Hospital Foundation Surgical Innovation Forum will feature a special lecture presentation by Dr. Melvin J. Silverstein and introduce the Society's Oncoplastic Surgery Credentialing Program.

In keeping with the theme of innovation, we will also feature presentations and discussions on other cutting-edge topics, including percutaneous management of breast cancer after a pCR, updates on the RTOG and Alliance radiation trials, breast cancer immunotherapy, nipple-sparing mastectomy in large breasts, surgeon-performed nerve blocks and pain management, prevention of lateral mastectomy dog ears, oral presen-

tations of the latest research, and a selection of "hot topic" Sunrise Workshop sessions. You will also be able to see the latest technology in our Exhibit Hall while networking with colleagues during breaks and social functions.

Expect to see many more videos of surgical procedures throughout the annual meeting, as well as our annual "How I Do It" video competition, to correspond with the launch of the Society's Online Video Library. We will complement our emphasis on innovation and video documentation with ethics lectures on obtaining informed consent for first time procedures and the Society's position statement on medical photography.

Pre-Meeting Courses

The 2019 meeting will start one day earlier to keep up with demand for a wider range of pre-meeting courses. We will once again feature both beginner and intermediate level oncoplastic skills courses, including cadaver labs at the UT Southwestern Medical Center. For those who could not register before the ever-popular oncoplastic courses sold out, we have added an Oncoplastic Surgery Primer on the final day of the general session to highlight key principles of oncoplastic surgery.

We have also programmed the always popular introductory breast ultrasound, stereotactic breast biopsy, and coding and documentation courses. In addition to the lymphedema surgery course and lab, we are excited to offer new courses on endocrine therapy for surgeons and advanced breast imaging, along with very practical courses in genetics and managing benign breast disease.

With so much going on, I apologize in advance if you cannot attend every pre-meeting course and Sunrise Workshop that interests you, but I am confident you will leave this year's meeting with many new insights and approaches to offer your patients.

Sincerely,

Dennis R. Holmes, MD, FACS
20th Annual Meeting Chair

20TH

ANNUAL MEETING

THE AMERICAN SOCIETY OF BREAST SURGEONS

Dallas, Texas ★ April 30 - May 5, 2019

Badge Pickup, Onsite Registration
and Housing Hours

Peacock Foyer

Tuesday	5:00 PM-7:30 PM*
Wednesday	6:00 AM-6:00 PM
Thursday	6:00 AM-7:30 PM
Friday	6:00 AM-4:30 PM
Saturday	6:00 AM-2:00 PM
Sunday	6:30 AM-10:00 AM

*Pre-registered pre-meeting course attendees only

Speaker Ready Room Hours

De La Salle

Tuesday	5:00 PM-7:30 PM
Wednesday	5:00 AM-7:30 PM
Thursday	5:00 AM-7:30 PM
Friday	5:00 AM-6:00 PM
Saturday	5:00 AM-6:00 PM
Sunday	6:00 AM-10:00 AM

Programs and Services*
Information Table

Trinity Prefunction

Friday	9:00 AM-4:30 PM
Saturday	9:00 AM-4:30 PM

*Have questions about our CME programs, membership, Mastery of Breast Surgery Program, certification, Nurse BEDI, BESAP, or how to follow the Society on Twitter or Facebook? Stop by the Society's Program and Services Information Table, located in the Trinity Prefunction, where staff and volunteers will be available to help you Friday and Saturday.

CME INFORMATION

Meeting Objectives

Upon completion of this live activity, participants should be able to

- Identify current treatment and management options for breast patients
- Assess available studies of breast patients

Target Audience

Surgeons with a special interest in the treatment of breast disease.

Accreditation

The American Society of Breast Surgeons is accredited by the Accreditation Council for Continuing Medical Education to provide continuing medical education for physicians.

Earn up to 23.75 Category 1 Credit(s)[™] Toward Part 2 of ABS Maintenance of Certification (MOC)

A selection of pre-meeting courses will not only provide an opportunity for surgeons to earn *AMA PRA Category 1 Credit(s)*[™], but will also include the self-assessment activities necessary to claim *AMA PRA Category 1 Credit(s)*[™] toward Part 2 of the American Board of Surgery (ABS) Maintenance of Certification (MOC) Program. These activities are identified in the agenda by this icon:

MOC

To earn credit, log in to your breastsurgeons.org account, click on "My Annual Meeting" under the Annual Meeting tab, and complete the following:

1. Online evaluations for the programs you have attended (CME).
2. Online pre-meeting course posttests with a minimum score of 75%, no later than June 17 (MOC).

DISCLOSURE INFORMATION

In compliance with ACCME Accreditation Criteria, The American Society of Breast Surgeons, as the accredited provider of this activity, must ensure that anyone in a position to control the content of the educational activity has disclosed all relevant financial relationships with any commercial interest. All reported conflicts have been managed by a designated official to ensure a bias-free presentation. General session disclosures are provided to all attendees separately. Pre-meeting course disclosures are provided in the course programs.

AMA Credit Designation

PRE-MEETING COURSES

TUESDAY, APRIL 30

FULL-DAY COURSES

Beginner Oncoplastic Skills Course with Mastotrainer and Cadaver Lab

The American Society of Breast Surgeons designates this live activity for a maximum of **8.5 AMA PRA Category 1 Credits**[™]. Physicians should claim only the credit commensurate with the extent of their participation in the activity.

MOC = 8.5 credits

Intermediate Oncoplastic Skills Course with Mastotrainer and Cadaver Lab

The American Society of Breast Surgeons designates this live activity for a maximum of **8.5 AMA PRA Category 1 Credits**[™]. Physicians should claim only the credit commensurate with the extent of their participation in the activity.

MOC = 8.5 credits

WEDNESDAY, MAY 1

FULL-DAY COURSES

Surgical Techniques for the Prevention and Management of Lymphedema: LYMPHA, Axillary Reverse Mapping, Lymph Node Transfer With Cadaver Lab

The American Society of Breast Surgeons designates this live activity for a maximum of **8 AMA PRA Category 1 Credits**[™]. Physicians should claim only the credit commensurate with the extent of their participation in the activity.

Genetics Primer for Breast Surgeons

The American Society of Breast Surgeons designates this live activity for a maximum of **7.5 AMA PRA Category 1 Credits**[™]. Physicians should claim only the credit commensurate with the extent of their participation in the activity.

Stereotactic Breast Biopsy: An Introductory Course

The American Society of Breast Surgeons designates this live activity for a maximum of **8 AMA PRA Category 1 Credits**[™]. Physicians should claim only the credit commensurate with the extent of their participation in the activity.

MOC = 8 credits

HALF-DAY COURSES

Back to Basics Refresher: Practical Application of Breast Imaging to Enhance Your Clinical Practice and Improve Patient Outcomes

The American Society of Breast Surgeons designates this live activity for a maximum of **5 AMA PRA Category 1 Credits**[™]. Physicians should claim only the credit commensurate with the extent of their participation in the activity.

Endocrine Therapy for Surgeons: Chemoprevention, Neoadjuvant, and Adjuvant Endocrine Therapy

The American Society of Breast Surgeons designates this live activity for a maximum of **4.25 AMA PRA Category 1 Credits**[™]. Physicians should claim only the credit commensurate with the extent of their participation in the activity.

Basic Coding and Documentation

The American Society of Breast Surgeons designates this live activity for a maximum of **2 AMA PRA Category 1 Credits**[™]. Physicians should claim only the credit commensurate with the extent of their participation in the activity.

Advanced Coding and Documentation

The American Society of Breast Surgeons designates this live activity for a maximum of **2.75 AMA PRA Category 1 Credits**[™]. Physicians should claim only the credit commensurate with the extent of their participation in the activity.

THURSDAY, MAY 2

FULL-DAY COURSES

Breast Ultrasound: An Introductory Course

The American Society of Breast Surgeons designates this live activity for a maximum of **7.25 AMA PRA Category 1 Credits**[™]. Physicians should claim only the credit commensurate with the extent of their participation in the activity.

MOC = 7.25 credits

Survivorship: How to Set Up a Survivorship Program that Fulfills ASCO, CoC and NAPBC Criteria With Integrative Approaches to Breast Cancer Survivorship

The American Society of Breast Surgeons designates this live activity for a maximum of **7.5 AMA PRA Category 1 Credits**[™]. Physicians should claim only the credit commensurate with the extent of their participation in the activity.

Surgical Techniques to Manage Benign and High-Risk Breast Disease: How I Do It

The American Society of Breast Surgeons designates this live activity for a maximum of **6.5 AMA PRA Category 1 Credits**[™]. Physicians should claim only the credit commensurate with the extent of their participation in the activity.

HALF-DAY COURSES

Advanced Breast Imaging: MBI, ABUS, Tomo, CE-MRI, Fast-MRI, Breast PEM

The American Society of Breast Surgeons designates this live activity for a maximum of **4.75 AMA PRA Category 1 Credits**[™]. Physicians should claim only the credit commensurate with the extent of their participation in the activity.

GENERAL SESSION

THURSDAY – SUNDAY, MAY 2-5

The American Society of Breast Surgeons designates this live activity for a maximum of **21.25 AMA PRA Category 1 Credits**[™]. Physicians should claim only the credit commensurate with the extent of their participation in the activity.

- **Thursday, May 2** = 1.25 AMA PRA Category 1 Credits[™]
- **Friday, May 3** = 8.5 AMA PRA Category 1 Credits[™] (this includes the Sunrise Workshops)
- **Saturday, May 4** = 7.5 AMA PRA Category 1 Credits[™]
- **Sunday, May 5** = 4 AMA PRA Category 1 Credits[™]

GENERAL INFORMATION

The American Society of Breast Surgeons

The following individuals and groups have been involved in the planning, implementation, and evaluation of the Annual Meeting:

BOARD OF DIRECTORS

President

Walton A. Taylor, MD, FACS

President-Elect

Jill R. Dietz, MD, FACS

Secretary/Treasurer

Julie A. Margenthaler, MD, FACS

Chairman of the Board

Shawna C. Willey, MD, FACS

Past President

Steven L. Chen, MD, MBA, FACS

Directors

Paul L. Baron, MD, FACS
Peter W. Blumencranz, MD, FACS
Susan K. Boolbol, MD, FACS
Judy C. Boughey, MD, FACS
Nathalie G. Johnson, MD, FACS
Eric R. Manahan, MD, FACS

Executive Director

Jane M. Schuster

ANNUAL MEETING COMMITTEE

Chair

Dennis Holmes, MD

Committee

Sarah L. Blair, MD, FACS
Susan K. Boolbol, MD, FACS
Katherina Zabicki Calvillo, MD, FACS
Steven L. Chen, MD, MBA, FACS
Jill R. Dietz, MD, FACS
Julie A. Margenthaler, MD, FACS
Henry M. Kuerer, MD, FACS
Walton A. Taylor, MD, FACS
Shawna C. Willey, MD, FACS
Katharine A. Yao, MD, FACS

Image-Guided Course

Ad Hoc Committee

Beth A. Boyd, RN
Richard E. Fine, MD, FACS
Surgical Lab Consultant
Helen Merrick RN, BSN

CME COMMITTEE

Chair

Sarah A. McLaughlin, MD, FACS

Committee

Joseph Contino, MD, FACS
Lynn Dengel, MD, FACS
Jillian Lloyd, MD, FACS

ETHICS COMMITTEE

Chair

Alyssa Throckmorton, MD, FACS

Committee

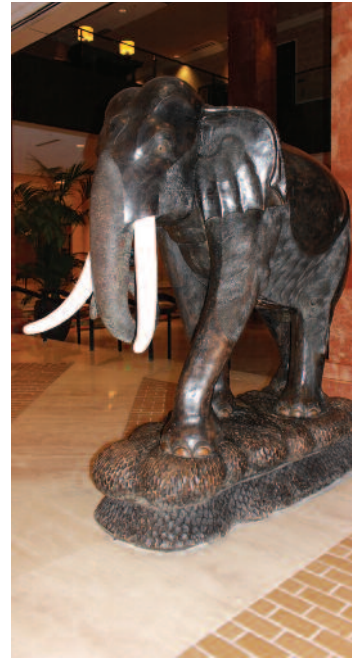
Emily Bellavance, MD
Tina J. Hieken, MD, FACS
David I. Kaufman, MD, FACS
Cindy Matsen, MD
Steven Nagel, MD
Toan T. Nguyen, MD, FACS
Jennifer K. O'Neill, MD, FACS
Caitlin Patten, MD, FACS
Terry Sarantou, MD, FACS
Paige Teller, MD
Sarah Tevis, MD, FACS
Lindi H. VanderWalde, MD, FACS

ASBrS STAFF

Marta Boyer
Jane Conway
Christina Lucara
Laura Randel
Joseph Schlosnagle
Tekoah White

Helpful Hints

- Wear your badge to all ASBrS sessions and events, including all social events. Badge pickup is located at the registration desk. Badges are required for entry to all sessions and events.
- The meeting rooms in the hotel tend to be cool. It's a good idea to bring a sweater or something similar you can throw on if you get cold.
- Wear comfortable shoes: you'll be walking a lot and may be on your feet for hours at a time.
- Carry plenty of business cards.
- Get social! Share your thoughts, photos, and ideas about this year's annual meeting. Follow **#ASBrS19** on Twitter or find the Society on Facebook.
- Find where you're going by accessing our conference maps in the app, program, or signs.
- Use the online program and Meeting App to get a head start on planning your conference schedule and contacting attendees with similar interests and needs.
- Printed course materials will not be provided onsite. Two complimentary cyber cafés with printers will be available throughout the conference.
- Put your tickets in a safe place so you will not lose them. A good place is in the back of your badge holder. This is also a good place for business cards.



Download the ASBrS 20th Annual Meeting Mobile App! Navigate the event like a pro with the ASBrS 2019 mobile app

With the ASBrS 2019 mobile app, you can:

- **NEW:** View **#ASBrS19** meeting abstracts after May 2 at 11:30am CT.
- Stay organized with up-to-the-minute Exhibitor, Speaker, and Event information
- Sync the app across all your devices with Multi-Device Sync
- Receive important real-time communications from ASBrS
- Build a personalized schedule and bookmark exhibitors
- Locate sessions and exhibitors on the Hilton Anatole venue maps
- Find attendees and connect with your colleagues
- Stay in-the-know and join the conversation using the Social Media icon **#ASBrS19**
- And much, much more!



Downloading the App is Easy!

SCAN: Use your devices QR code scanner to quickly find the **ASBrS 2019 app**.



SEARCH: The App Store or Google Play for "ASBrS Annual Meeting"



Point your mobile browser to **www.core-apps.com/dl/asbrs2019** to be directed to the proper download version for your device.

Platform Compatibility: Android v4x+ and iOS v7x+


Should you have any questions, please contact support@core-apps.com

Stay Connected!

ASBrS Meeting Space
Wi-Fi Network **ASBS2019**,
password **asbs2019**

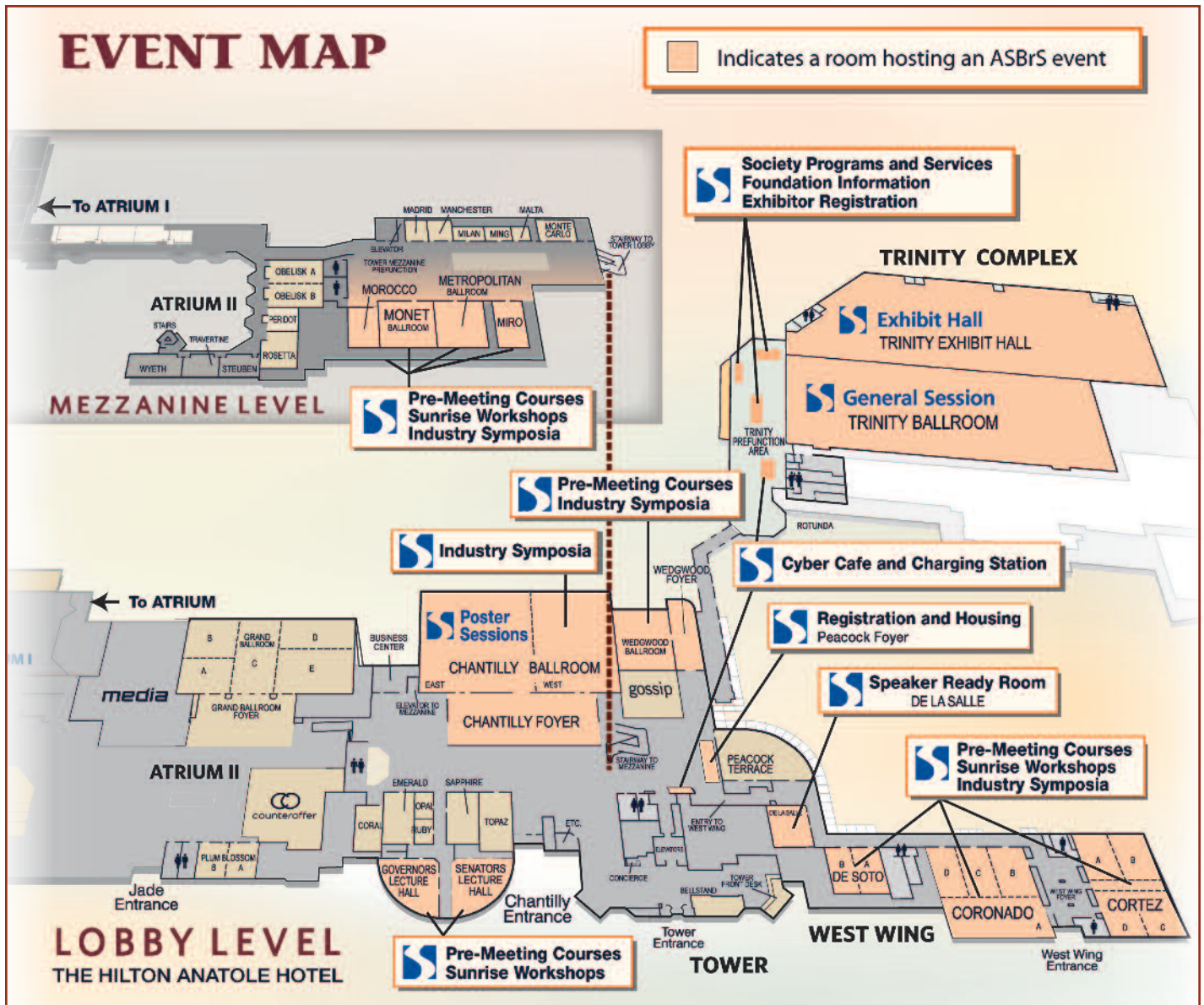
Share your thoughts, photos and ideas about this year's annual meeting.

 Follow **#ASBrS19**
on Twitter **or**

 find the Society
on Facebook.

Charging Stations and Cyber Cafe are in the Trinity Prefunction and Peacock Foyer. Additional charging stations are located in the general session hall.

GENERAL INFORMATION



Audience Engagement Technology through Poll Everywhere

Participate in Q&A Using Poll Everywhere

All general sessions with Q&A or panel discussion time will allow the audience participation via eQ&A. Please follow the instructions below to submit your questions for speakers via cell phone or other electronic device:

To submit a question via text message

(Text message rates may apply.)

1. Text **ASBRs** to **22333**.
2. You will receive a confirmation text that you have joined the eQ&A session.
3. To submit a question, reply to the confirmation text. Lead with your last name and home state abbreviation (for example: Smith, TX), then input your question.
4. Send your message.

NOTE: Questions submitted by text are limited to 140 characters. Texts submitted over the character limit will be truncated and sent to the session moderator as separate texts.

To submit a question via Poll Everywhere website

(preferred option for international attendees)

1. Connect to the Internet using the ASBrS Meeting Wi-Fi Network: **ASBS2019** Password: **asbs2019**.
2. Open a Web browser on your phone, tablet, or laptop.
3. Go to **pollev.com/ASBRs**.
4. The screen will update automatically when **eQ&A** is open.
5. To submit a question, lead with your last name and state (if not from the USA, use country instead of state), then enter your question into the dialogue box; and select **"Submit Response."**

GENERAL INFORMATION



Foundation Table *Trinity Prefunction*

Thursday2:00 PM-4:00 PM
Friday9:00 AM-4:30 PM



breast360.org is a patient resource provided by
The American Society of Breast Surgeons Foundation
www.breastsurgeonsfoundation.org

Visit the American Society of Breast Surgeons Foundation Table; Get a Chance to win a \$500, \$250, or \$100 American Express Gift Card; and Find Below-retail Deals in the Online Silent Auction

How to Participate in the Explore for More Program:

1. Look for the Explore for More card in your printed program.
2. Visit the exhibitors listed on the card.
3. Drop off your card at the American Society of Breast Surgeons Foundation Table.

How to Participate in the Online Silent Auction:

1. View the auction items at the Foundation Table or online at https://www.32auctions.com/ASBrS_Foundation
2. Create an account at this website, when you found what you'd like to bid on or purchase.
3. Purchase or bid on items May 1-May 4.

Other Great Reasons to Visit the American Society of Breast Surgeons Foundation Table:

1. Get a fancy lanyard for your attendee badge.
2. Turn in your Explore for More card for chances to win gift cards and prizes!
3. Pick up free Breast360 cards that you can hand out to patients, complementing your clinical guidance and care.
4. Make a charitable donation that supports the Foundation's public outreach, promoting patients, and helping underserved populations.

Thank you in advance for participating and supporting the American Society of Breast Surgeons Foundation, a 501(c)3 charitable organization, dedicated to advancing breast care to all populations, and enhancing the patient's experience.

Conference Video and Photography Policy

GENERAL SESSION:

Non-flash photography and audio or video recording using hand-held equipment for strictly personal, social, or noncommercial use are permitted in the general session if not disruptive as determined by ASBrS. However, recording or live-streaming sessions or presentations in their entirety is strictly prohibited without prior permission from the ASBrS. ASBrS and the authors/presenters (as appropriate) retain copyright to their own work and reserve the right to ask for takedown of copyrighted material, this policy notwithstanding.

PRE-MEETING COURSES:

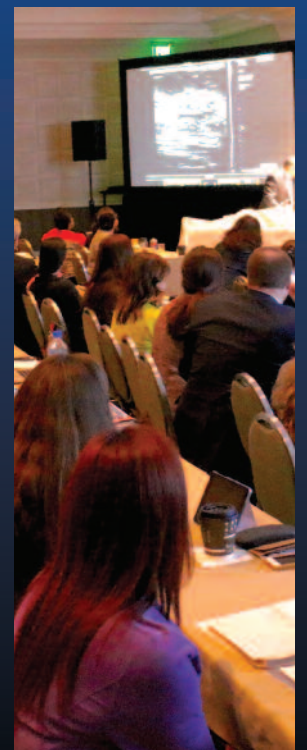
Photography & video recordings are strictly prohibited.

Next-Day Access to General Session Presentations and Evaluations Available to Meeting Attendees

2019 meeting attendees will be able to view and/or download general session PowerPoint presentations (with some exceptions) via the Society website approximately 24 hours following each live presentation. To access, you must log onto www.breastsurgeons.org as a member or registered user and be a 2019 annual meeting registrant.

Free Online Access to Video Recordings of General Session for All Registered Attendees

Video recordings of each general session presentation, integrated with the PowerPoint presentations (with some exceptions), will be available online FREE to all meeting registrants approximately 4 to 6 weeks following the meeting. Providing materials online following the program ensures that attendees have access to the actual presentations used by each speaker onsite.



PRE-MEETING COURSES

TUESDAY, APRIL 30

7:00 AM-4:30 PM **Beginner Oncoplastic Skills Course With Mastotrainer and Cadaver Lab** **MOC**

Lecture: *Governors Lecture Hall*

Lab: *UT Southwestern Medical Center*

Transportation will be provided for those participating in the lab.

Moderators: Jennifer Gass, MD; Juliann Reiland, MD

7:00 AM-4:30 PM **Intermediate Oncoplastic Skills Course With Mastotrainer and Cadaver Lab** **MOC**

Lecture: *Senators Lecture Hall*

Lab: *UT Southwestern Medical Center*

Transportation will be provided for those participating in the lab.

Moderators: Abhishek Chatterjee, MD, MBA; Juliann Reiland, MD



WEDNESDAY, MAY 1

FULL-DAY COURSES:

7:00 AM-4:30 PM **Surgical Techniques for the Prevention and Management of Lymphedema: LYMPHA, Axillary Reverse Mapping, Lymph Node Transfer With Cadaver Lab**

Lecture: *DeSoto*

Lab: *UT Southwestern Medical Center*

Transportation will be provided for those participating in the lab.

Moderators: Sheldon Feldman, MD; V. Suzanne Klimberg, MD, PhD

7:00 AM-5:00 PM **Genetics Primer for Breast Surgeons** *Governors Lecture Hall*

Moderators: Kevin Hughes, MD; Molly Sebastian, MD

7:00 AM-5:00 PM **Stereotactic Breast Biopsy: An Introductory Course** **MOC**

Lecture: *Cortez D*

Workshop: *Cortez A-B*

Moderators: Sharla Gayle Patterson, MD, MBA; Victor Zannis, MD



HALF-DAY COURSES:

7:00 AM-12:00 PM **Back to Basics Refresher: Practical Application of Breast Imaging to Enhance Your Clinical Practice and Improve Patient Outcomes**

Senators Lecture Hall

Moderators: Linda Han, MD; Rosa Hwang, MD

7:00 AM-12:00 PM **Endocrine Therapy for Surgeons: Chemoprevention, Neoadjuvant, and Adjuvant Endocrine Therapy**

Metropolitan

Moderators: J. Michael Dixon, OBE, MD; Ronda Henry-Tillman, MD

10:00 AM-12:00 PM **Basic Coding and Documentation** *Monet*

Moderators: Terry Sarantou, MD; Amanda Wheeler, MD

1:00 PM-4:00 PM **Advanced Coding and Documentation** *Monet*

Moderators: Terry Sarantou, MD; Amanda Wheeler, MD

8:00 PM-9:30 PM **Evening Industry Symposia**

Evening Industry Symposia

Wednesday, 8:00 PM-9:30 PM

Sharpen your Skills: Hot Topics in Genetic Testing for Hereditary Breast Cancer

**Ambry Genetics, Inc.
Monet**

Contrast Enhanced Mammography: A Simplified Way to Address the Advanced Imaging Needs of Your Patients

**GE Healthcare
Metropolitan**

Note: Satellite symposia are supported by industry through marketing grants. They are not part of the official program of the ASBrS. CME credits for these programs, if applicable, will not be provided by the ASBrS. These activities are free to all registered attendees.

PRE-MEETING COURSES

THURSDAY, MAY 2

FULL-DAY COURSES

7:00 AM-3:30 PM

Breast Ultrasound: An Introductory Course **MOC**

Lecture: Wedgwood Ballroom

Workshop: Coronado

Moderators: Richard Fine, MD; Shawna Willey, MD

7:00 AM-3:30 PM

Survivorship: How to Set Up a Survivorship Program that Fulfills ASCO, CoC and NAPBC Criteria With Integrative Approaches to Breast Cancer Survivorship **Governors Lecture Hall**

Moderators: Beth DuPree, MD, ABOIM; Nathalie Johnson, MD

7:00 AM-3:30 PM

Surgical Techniques to Manage Benign and High-Risk Breast Disease: How I Do It **Senators Lecture Hall**

Moderators: Toan Nguyen, MD; Theresa Schwartz, MD

HALF-DAY COURSES

7:00 AM-12:00 PM

Advanced Breast Imaging: MBI, ABUS, Tomo, CE-MRI, Fast-MRI, Breast PEM

Monet

Moderators: Paul Baron, MD; Souzan El-Eid, MD

10:00 AM-3:30 PM

Fellows Track (*pre-registration required)

Metropolitan

Moderators: Susan Boolbol, MD; Brigid Killelea, MD

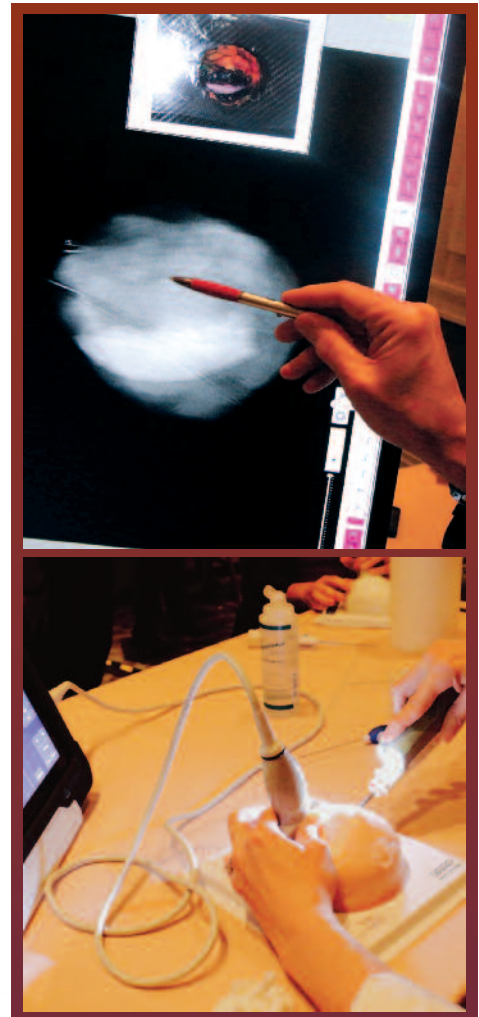
**The Fellows Track is a special supplemental session designed to address the unique needs of current and prospective breast fellows. Participation in the program is reserved for fellows participating in a year-long multidisciplinary breast surgery fellowship program and residents entering or interested in a breast fellowship. Pre-registration was required.*

The Fellows Track is supported by Genomic Health, Inc., through a marketing grant.

11:30 AM-12:30 PM

Breast Fellows Lunch (RSVP required)

Miro



GENERAL SESSION

THURSDAY, MAY 2

Trinity Ballroom

4:00 PM-4:15 PM	Welcome	Dennis Holmes, MD; Walton Taylor, MD
4:15 PM-4:45 PM	Coding and Reimbursement Highlights: What's on the Horizon	Richard Fine, MD; Robert Jasak, JD
4:45 PM-5:00 PM	American Board of Surgery Recertification Update	Regina Hampton, MD
5:00 PM-5:20 PM	Physician Salary Survey Update	Eric Manahan, MD

5:30 PM-7:30 PM

INDUSTRY-SUPPORTED SYMPOSIUM

Beyond TAILORx: Using Recurrence Score® Results in Loco-Regional Control, Node-Positive and Neoadjuvant Decisions Genomic Health, Inc.

Description: A review of the current data surrounding chemotherapy decisions with the Recurrence Score in women under 50 years old.

Presenters:

Richard J. Bleicher, MD, FACS, Professor, Department of Surgical Oncology, Director, Breast Fellowship Program, Fox Chase Cancer Center

Terry Mamounas, MD, MPH, Medical Director, Comprehensive Breast Program, Orlando Health, UF Health Cancer Center

Tari A. King, MD, FACS, Chief of Breast Surgery, Dana Farber/Brigham and Women's Cancer Center, Associate Professor of Surgery, Harvard Medical School

Christy A. Russell, MD, Senior Director, Medical Affairs, Genomic Health

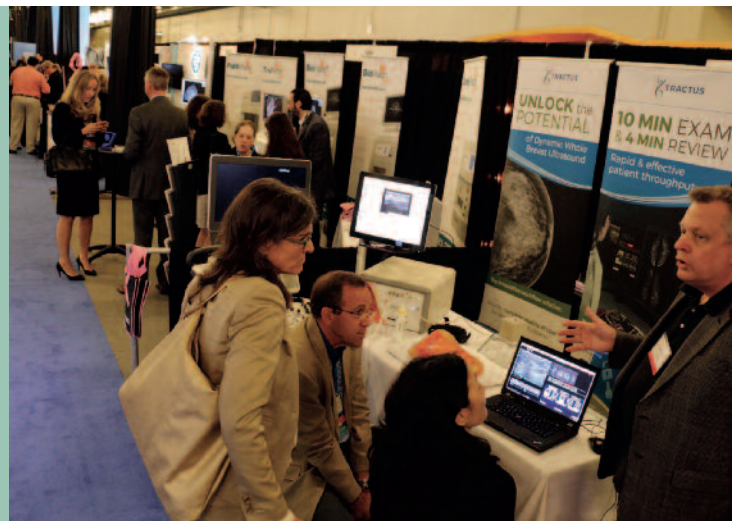
NOTE: This satellite symposium is supported by Genomic Health, Inc., through a marketing grant. It is not part of the official program of the ASBrS. CME credits for these programs, if applicable, will not be provided by the ASBrS. This activity is free to all registered attendees.

Industry-Supported Symposia

Industry-supported symposia, which have been made possible through marketing support, will be held Wednesday, Thursday and Friday, and Saturday morning. Details on industry-supported symposia can be found on pages 6, 8, 11 and 12 in the program.

Industry symposia are not part of the official program of the ASBrS. CME credits for these programs, if applicable, will not be provided by the ASBrS. These activities are free to all registered attendees.

7:30 PM-9:00 PM **Opening Reception in Exhibit Hall** *Trinity Exhibit Hall*



GENERAL SESSION

FRIDAY, MAY 3

6:45 AM-7:45 AM

SUNRISE WORKSHOPS *Pre-purchased tickets required.*

- B1 Mastering Mastery of Breast Surgery**
Coronado A
Linda Smith, MD; Kathryn Wagner, MD
- B2 Breast Ultrasound and Stereotactic Certification: The Nuts and Bolts of the Process**
Coronado D
Souzan El-Eid, MD; Sara Fredrickson, MD
- B3 Ongoing Controversies in Margin Management**
Cortez A
Jeffrey Falk, MD; Katharine Yao, MD
- B4 Breast Reconstruction and Radiation: Optimal Treatment Strategies**
Morocco
Tiffany Berry, MD, MBA; Abhishek Chatterjee, MD, MBA; Ronda Henry-Tillman, MD; Rakesh Patel, MD
- B5 Sentinel Node Biopsy After Neoadjuvant Therapy: Principles and Techniques**
Senators Lecture Hall
Abigail Caudle, MD; Jennifer Racz, MD
- B6 Nipple-Sparing Mastectomy: Optimal Incision Locations and Technical Considerations**
Governors Lecture Hall
Suzanne Coopey, MD; Sunny Mitchell, MD
- B7 Tumor Genomics to Individualize Systemic Therapy: What the Surgeon Needs to Know**
Cortez D
Peter Blumencranz, MD; Lisa Curcio, MD

- B8 Management Strategies for Locally Recurrent Breast Cancer: Redo-Lumpectomy, Redo-Sentinel Node Biopsy, Redo-Radiation**
Monet
Zahraa Al-Hilli, MD
- B9 Best Practices for Conducting Clinical Research in the Community Practice Setting**
Coronado C
Paul Baron, MD; Julie Barone, MD
- B10 Immunotherapy Primer for Breast Surgeons**
Metropolitan
Brian Czerniecki, MD; Elizabeth Mittendorf, MD
- B11 Perioperative Pain Management, Regional Blocks, and Nausea Prevention**
Miro
V. Suzanne Klimberg, MD, PhD.; Shawna Willey, MD
- B12 Sustainability in Breast Surgery: Combating Physician Burnout**
Cortez C
Kelly Hunt, MD; Ted James, MD, MHCM
- B13 Percutaneous Ablation of Breast Cancer**
De Soto
David Brenin, MD; Eric Manahan, MD, MBA; Barbara Schwartzberg, MD

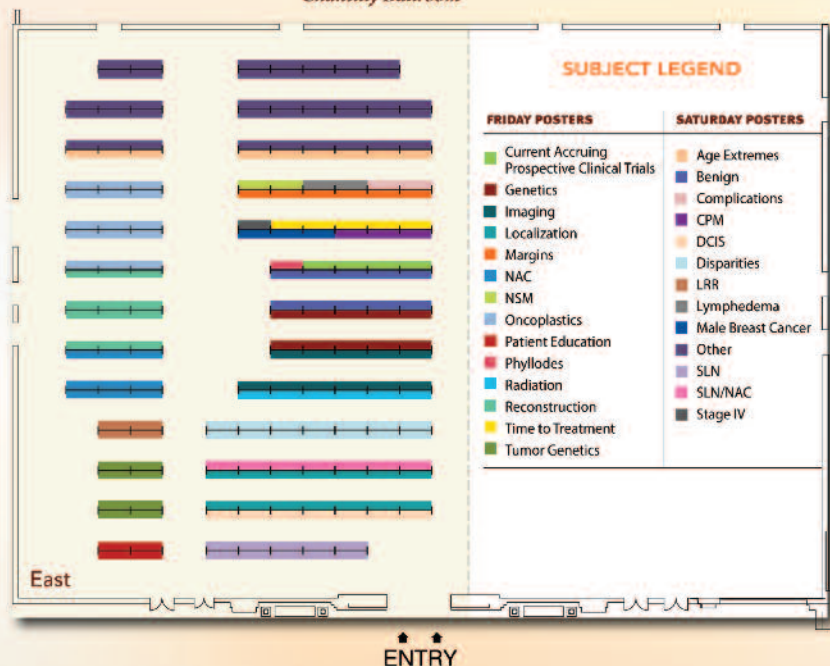
Poster Sessions and Receptions

Friday, 6:00 PM-7:30 PM;
Saturday, 6:30 PM-7:30 PM
Chantilly Ballroom East

Don't miss this opportunity to review the latest scientific developments. Enjoy light refreshments in a relaxing atmosphere as you meet the presenters during each of this year's two poster sessions. Posters have been divided into distinct categories for each session to enhance viewing. *Free to all registered attendees.*

Poster Subject Location

Chantilly Ballroom



GENERAL SESSION

FRIDAY, MAY 3

Trinity Ballroom

8:00 AM-8:10 AM	Welcome	Dennis Holmes, MD
8:10 AM-9:30 AM	<p>The John Wayne Critical Issues in Breast Cancer Forum: Changing Paradigms for Breast Cancer Surgery Supported by an educational grant from the John Wayne Cancer Foundation</p> <ul style="list-style-type: none"> ▶ Breast Cancer Cryoablation: Update on Ongoing Trials ▶ Intraoperative Radiotherapy: Updates on TARGIT, ELIOT, Xofigo ▶ Robotic Nipple-Sparing Mastectomy and Reconstruction: Results of A Randomized Controlled Trial 	<p>Moderator: Steven L. Chen, MD, MBA</p> <p>Cary Kaufman, MD William Small, Jr., MD Antonio Toesca, MD</p>
9:30 AM-10:00 AM	Break in Exhibit Hall <i>Trinity Exhibit Hall</i>	
10:00 AM-11:15 AM	<p>Emerging Strategies in Breast Cancer Care</p> <ul style="list-style-type: none"> ▶ Selective Management of DCIS: Update of Ongoing Trials (COMET, LORD, LORIS) ▶ Percutaneous Management of Breast Cancer After pCR Following Neoadjuvant Chemotherapy ▶ Axillary Management Following Neoadjuvant Systemic Therapy: Status Report of Alliance and RTOG Trials 	<p>Moderator: Amy Degnim, MD</p> <p>E. Shelley Hwang, MD Henry Kuerer, MD, PhD Judy Boughey, MD</p>
11:15 AM-12:00 PM	<p>PRESIDENTIAL ADDRESS Succeeding in an Uncertain Future Introduction by President-Elect Jill Dietz, MD</p>	Walton Taylor, MD
12:00 PM-1:00 PM	Lunch in Exhibit Hall <i>Trinity Exhibit Hall</i>	
1:00 PM-1:15 PM	ASBrS New Mammography Screening Guidelines	Julie Margenthaler, MD Shawna Willey, MD
1:15 PM-2:00 PM	<p>Hoag Hospital Surgical Innovation Forum Supported by an educational grant from Hoag Memorial Hospital Presbyterian</p> <ul style="list-style-type: none"> ▶ Oncoplastic Surgery: An Emerging Standard ▶ Oncoplastic Surgery: ASBrS Perspective and Oncoplastic Surgery Credentialing 	<p>Moderator: Dennis Holmes, MD</p> <p>Melvin Silverstein, MD Juliann Reiland, MD</p>
2:00 PM-3:30 PM	<p>Scientific Oral Presentations I</p> <ul style="list-style-type: none"> • A Randomized Prospective Trial of Supine MRI Guided vs Wire Localized Lumpectomy for Breast Cancer • Patient selection for non-operative management of HER2+ invasive breast cancer after neoadjuvant systemic therapy • Burnout and Professional Fulfillment in Breast Surgeons • Reducing Narcotic Prescriptions in Breast Surgery Patients: A Prospective Analysis • Implementation of Post-Mastectomy Home Recovery Program in a Large, Integrated Health Delivery System • Interim Analysis Lymphedema "PREVENT" Trial • Transcriptomic Changes in Invasive Residual Cancer after Neoadjuvant Chemotherapy in Patients with Triple Negative Breast Cancer • Perspectives on the Costs of Cancer Care: A Survey of the American Society of Breast Surgeons • Physician Knowledge of Contralateral Breast Cancer and Local Recurrence Risk Is Associated with Increased Recommendations for Contralateral Prophylactic Mastectomy: A Survey of Physicians at NAPBC Accredited Centers 	<p>Moderators: Sarah Blair, MD Henry Kuerer, MD, PhD</p> <p>Richard Barth, MD Susie Sun, MD Jennifer Zhang, MD Betty Fan, MD Brooke Vuong, MD Sheila Ridner, PhD, RN Javier Orozco, MD Rachel Greenup, MD Olga Kantor, MD</p>

GENERAL SESSION

FRIDAY, MAY 3

3:30 PM-4:00 PM	Break in Exhibit Hall <i>Trinity Exhibit Hall</i>	
4:00 PM-5:00 PM	Updates in Loco-Regional Management of Breast Cancer <ul style="list-style-type: none"> ▶ Nipple-Sparing Mastectomy in Large Breasts: Strategies and Solutions ▶ Is Post-Mastectomy Radiotherapy Really Necessary for 1-3 Positive Nodes? ▶ Surgical Prevention of Breast Cancer Related Lymphedema 	Moderator: Katharine Yao, MD Nathalie Johnson, MD William Small, Jr., MD Sheldon Feldman, MD
5:00 PM-5:15 PM	 THE AMERICAN SOCIETY OF BREAST SURGEONS Annual Business Meeting	
5:15 PM-6:00 PM	Evidence-Based Prevention and Management of Surgical Complications <ul style="list-style-type: none"> ▶ Mastectomy Flap Ischemia and Necrosis ▶ Acute and Chronic Post-Mastectomy Seroma ▶ Acute and Chronic Post-Mastectomy Pain ▶ Panel Discussion 	Moderator: Hiram Cody, III, MD Mahmoud El-Tamer, MD V. Suzanne Klimberg, MD, PhD Amal Khoury, MD, MPH All Faculty
6:00 PM-7:30 PM	Poster Session and Reception Chantilly Ballroom East <i>"How I Do It" Video Session</i>	Video Session Moderators: Michael Sabel, MD; Courtney Vito, MD

7:30 PM-9:30 PM **EVENING INDUSTRY SYMPOSIA**

- Treatment Considerations for High Risk Patients with Early Breast Cancer**
Genentech
Chantilly Ballroom West
- Breast Cancer Surgery Redefined: Novel Technologies and Techniques that Expand Indications for Nipple-Sparing Mastectomy, Oncoplastic Surgery and Hidden Scar® Techniques**
Stryker
Wedgwood Ballroom
NOTE: Satellite symposia are supported by industry through marketing grants. They are not part of the official program of the ASBrS. CME credits for these programs, if applicable, will not be provided by the ASBrS. These activities are free to all registered attendees.



PAST PRESIDENTS

- 1995 - 1997Robert B. Caplan, MD
- 1997 - 1999C. Alan Henry, MD
- 1999 - 2000Rache M. Simmons, MD
- 2000 - 2001Mark A. Gittleman, MD
- 2001 - 2002Arthur G. Lerner, MD
- 2002 - 2003Michael J. Edwards, MD
- 2003 - 2004Richard E. Fine, MD
- 2004 - 2005Lorraine Tafra, MD
- 2005 - 2006Edgar D. Staren, MD, PhD, MBA
- 2006 - 2007Helen A. Pass, MD
- 2007 - 2008Jay K. Harness, MD
- 2008 - 2009Shawna C. Willey, MD
- 2009 - 2010Victor J. Zannis, MD
- 2010 - 2011Eric B. Whitacre, MD
- 2011 - 2012Howard C. Snider, Jr., MD
- 2012 - 2013V. Suzanne Klimberg, MD, PhD
- 2013 - 2014Peter D. Beitsch, MD
- 2014 - 2015Hiram S. Cody, III, MD
- 2015 - 2016Deanna J. Attai, MD
- 2016 - 2017Sheldon M. Feldman, MD
- 2017 - 2018Steven L. Chen, MD, MBA



GENERAL SESSION

SATURDAY, MAY 4



Kathy Bates

Keynote Speaker

Academy Award-winning actress Kathy Bates will deliver the keynote address at the ASBrS 2019 Annual Meeting. Honored numerous times for her work, Ms. Bates is an undeniable force on stage, screen, and television.

For the past several years, Kathy Bates has served as a spokesperson for the Lymphatic Education and Research Network (LE&RN). LE&RN is an internationally recognized non-profit organization founded in 1998 to fight lymphatic diseases and lymphedema through education, research, and

advocacy. With chapters throughout the world, LE&RN seeks to accelerate the prevention, treatment, and cure of these diseases while bringing patients and medical professionals together to address the unmet needs surrounding lymphatic diseases, which include lymphedema and lipedema.

Kathy Bates developed lymphedema in both arms following a double mastectomy. The Society is honored to have Ms. Bates share her personal experiences living with the disease.

6:15 AM-7:45 AM

BREAKFAST INDUSTRY SYMPOSIA

- **Virtual Cadaver Hands-On Workshop: Identifying Breast and Abdominal Planes for Surgical Infiltration to Manage Post-Surgical Pain**
Albert Einstein College of Medicine
Coronado A
- **Advanced Utilization of Wire-Free Technology from Biopsy to Surgery**
Cianna Medical, Powered by Merit Medical
Wedgwood Ballroom
- **BioZorb® and a New Way to 5-day Hologic**
Chantilly Ballroom West
- **On the Cusp of the Era of Immuno-Oncology in Triple-Negative Breast Cancer: Rational Strategies to Make the Most of Immunotherapies and Other Effective Treatment Modalities Throughout the Disease Continuum**
Peerview Institute
Coronado B, C, D

NOTE: Satellite symposia are supported by industry through marketing grants. They are not part of the official program of the ASBrS. CME credits for these programs, if applicable, will not be provided by the ASBrS. These activities are free to all registered attendees.

Trinity Ballroom

8:00 AM-8:10 AM

The American Society of Breast Surgeons Lifetime Achievement Award

Presented by Walton Taylor, MD

8:10 AM-9:15 AM

Practical Considerations for Systemic Treatment

- ▶ Use of Genomic Profiling to De-escalate Breast Cancer Therapy
- ▶ Strategies for Targeted Axillary Dissection Following Neoadjuvant Systemic Therapy
- ▶ Breast Cancer Immunotherapy and Surgical Implications

Moderator: Peter Blumencrantz, MD

Judy Boughey, MD

Barry Rosen, MD

Elizabeth Mittendorf, MD

9:15 AM-9:45 AM

Break in Exhibit Hall *Trinity Exhibit Hall*

9:45 AM-10:30 AM

Best Breast Papers of 2018

Helen Pass, MD

10:30 AM-11:15 AM

Breast Imaging Update

- ▶ Impact of Breast Density on Breast Cancer Risk
- ▶ Balancing High-risk Screening With Gadolinium Risk: Optimal Protocols
- ▶ Breast Imaging Primer for Surgeons: Interpretation and Surgical Planning
- ▶ Lesion Localization Strategies: Beyond the Wire

Moderator: Susan Boolbol, MD

Molly Sebastian, MD

Brigid Killelea, MD

Toni Storm-Dickerson, MD

Jill Dietz, MD

GENERAL SESSION

SATURDAY, MAY 4

11:15 AM-12:00 PM

KEYNOTE ADDRESS

Kathy Bates, LE&RN Spokesperson and Academy Award-Winning Actress
Introduction by Walton Taylor, MD and William Repicci,
 Lymphatic Education & Research Network (LE&RN)

Supported by

FOUNDATION

12:00 PM-1:30 PM

Lunch in Exhibit Hall **Trinity Exhibit Hall**

1:30 PM-3:15 PM

Scientific Oral Presentations II

- Preliminary results of a multi-center feasibility trial for real-time, intraoperative detection of residual breast cancer in lumpectomy cavity margins using the LUM Imaging System
- The role of loco-regional treatment in long-term quality of life in de novo stage IV breast cancer patients; Protocol MF07-01Q
- Neoadjuvant endocrine therapy vs chemotherapy in node-positive invasive lobular carcinoma
- Same-day surgery for mastectomy patients in Alberta: a perioperative care pathway and quality improvement initiative
- Is Routine Oncotype Testing in Patients Over 70 Years of Age Warranted? An Evaluation of the National Cancer Data Base after TAILORx
- Evaluation of Hormonal Profile of Breast Cancer using 16 A-18 F-Fluro-Estradiol PET CT: A novel technique
- Sexual Dysfunction in Survivorship; the Impact of Menopause and Endocrine Therapy
- DCIS with Microinvasion: Is it in situ or invasive disease?
- A Comparison of Patient-Reported Outcomes after Breast-Conserving Surgery and Mastectomy with Implant Breast Reconstruction
- Outcomes of >1300 Nipple-Sparing Mastectomies with Immediate Reconstruction: The Impact of Expanding Indications on Complications

Moderators: Henry Kuerer, MD, PhD
 Kimberly Van Zee, MD

Barbara Smith, MD

Atilla Soran, MD

Madeline Thornton, BA

Alysha Keehn, MD

Rachel Lee, MD

Seenu Vuthaluru, MD

Reed Kuehn, MD

Jennifer Plichta, MD

Meghan Flanagan, MD, MPH

Whitney Young, MD

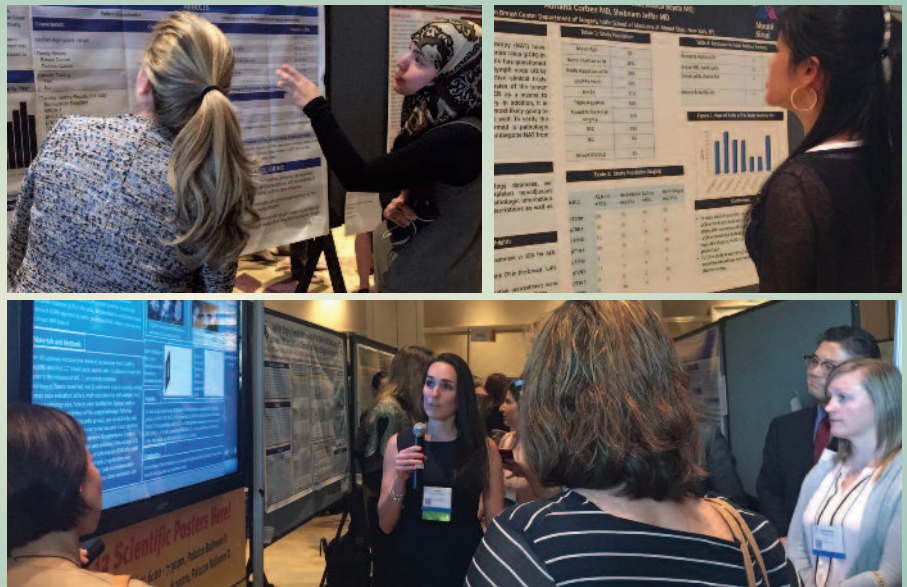
3:15 PM-3:45 PM

Break in Exhibit Hall **Trinity Exhibit Hall**

Scientific Session Abstracts

All scientific abstracts presented, either orally or as a poster, at this year's meeting can be viewed as follows:

- Through the ASBrS Annual Meetings mobile app (See page 3.)
- On the 2019 Annual Meeting page of the Society website (Click on "2019 Official Proceedings.")
- ASBrS 2019 meeting abstracts are embargoed until May 2 at 11:30 AM CT.



GENERAL SESSION

SATURDAY, MAY 4

3:45 PM-4:40 PM

Quickshot Presentations

- Are we Overtreating Hormone Receptor Positive Breast Cancer with Neoadjuvant Chemotherapy? Correlating OncotypeDx® Results with Tumor Response in Patients Undergoing Neoadjuvant Chemotherapy
- Effect of surgery type on time to adjuvant chemotherapy and impact of delay on breast cancer survival: A national cancer database analysis
- Exploring Surgeon Variability in Recommendations for Contralateral Prophylactic Mastectomy: What Matters Most?
- Utility of Second Sentinel Lymph Node Biopsy for Patients with cN0 Ipsilateral Breast Cancer Recurrence after an Initial Sentinel Lymph Node Biopsy
- Value of Sentinel Lymph Node Biopsy for Microinvasive Breast Cancer
- p16 as a Biomarker to Distinguish Atypical Ductal Hyperplasia from Ductal Carcinoma in Situ and to Predict Breast Cancer Progression
- The "Nipple Whipple"?! A Pilot Study to Assess the Ergonomic Effects of Nipple-Sparing Mastectomy
- National Patterns of Nipple-Sparing Mastectomy for Breast Cancer, 2005-2015
- Provider Perspective: Fertility Preservation Discussions in Premenopausal Breast Cancer Patients
- Distress characterizing what causes the thermometer to rise in patients with newly diagnosed breast cancer attending a multidisciplinary clinic

Moderators: Katherina Zabicki Calvillo, MD
Richard White, Jr., MD

Olga Kantor, MD

Amanda Kupstas, MD

Mark Taylor, MD

Akiko Ogiya, MD

Amulya Alapati, MD

Judy Tjoe, MD

Katherine Kopkash, MD

Stephanie Wong, MD

Alex Bartholomew, MD

Chelsey Ciambella, MD

4:40 PM-6:15 PM

Great Debates in Breast Cancer

- ▶ Have Margin Consensus Guidelines Significantly Reduced Re-Excision Rates? **Yes**
Have Margin Consensus Guidelines Significantly Reduced Re-Excision Rates? **No**
- ▶ Following Neoadjuvant Chemotherapy, Should the Extent of Surgery and Radiotherapy Be Based on the Presenting Stage? **Yes**
Following Neoadjuvant Chemotherapy, Should the Extent of Surgery and Radiotherapy Be Based on the Presenting Stage? **No**
- ▶ Neoadjuvant Endocrine Therapy is Better Than Neoadjuvant Chemotherapy for Hormone Receptor-Positive Breast Cancer? **Agree**
Neoadjuvant Endocrine Therapy is Better Than Neoadjuvant Chemotherapy for Hormone Receptor-Positive Breast Cancer? **Disagree**

Moderator: Anees Chagpar, MD

Swati Kulkarni, MD

Rogsbert Phillips, MD

Terry Mamounas, MD

Hiram Cody, III, MD

J. Michael Dixon, OBE, MD

Kelly Hunt, MD

6:30 PM-7:30 PM

Poster Session and Reception II *Chantilly Ballroom East* "Oncoplastics, How I Do It Now!" Video Session

Video Session Moderators:
Katherine Kopkash, MD
Lashan Peiris, MD, MBBS, BSc, FRCS (Lon)

7:30 PM-8:30 PM

President's Reception and Awards Presentation *Chantilly Foyer*

President's Reception and Award Presentations

7:30 PM-8:30 PM
Chantilly Foyer

Join your colleagues immediately following the general session to toast the Society's outgoing president, Dr. Walton Taylor, and congratulate the scientific session award winners.



GENERAL SESSION

SUNDAY, MAY 5

7:00 AM-7:45 AM

Oncoplastic Surgery Primer

- ▶ Optimal Incision Placement for Improved Breast Cosmesis
- ▶ Tissue Planes and Glandular Mobilization to Facilitate Cancer Resection and Wound Closure
- ▶ Donut Mastopexy: The Work-Horse of Level I Oncoplastic Surgery

Moderator: Abhishek Chatterjee, MD, MBA
Katherine Kopkash, MD

Barry Rosen, MD
Jennifer Gass, MD

7:45 AM-9:00 AM

Ethical Issues in Breast Cancer Surgery

- ▶ Patient-Centered Care When Patient Autonomy Conflicts With Standard of Care
- ▶ Obtaining Informed Consent When Performing a New Procedure
- ▶ Proper Prescribing of Narcotics in Breast Surgery
- ▶ Ethical Considerations of Medical Photography: ASBrS Position

Moderator: Alyssa Throckmorton, MD

Rachel Greenup, MD
Terry Sarantou, MD
Sarah DeSnyder, MD
Toan Nguyen, MD

9:00 AM-10:00 AM

New Perspectives on Old Problems

- ▶ What is the Role of Breast-Conserving Surgery for Multicentric Breast Cancer?
- ▶ In-breast Tumor Recurrences: When is Repeat Lumpectomy Appropriate?
- ▶ Should all Breast Cancer Patients Undergo Genetic Testing?
- ▶ What are the Best Strategies for Eliminating the Lateral Mastectomy Dog-ear?

Moderator: Ronda Henry-Tillman, MD

Lee Wilke, MD

Stephen Grobmyer, MD
David Euhus, MD

Lashan Peiris, MBBS, BSc, FRCS (Lon)

10:00 AM-11:00 AM

Benign Breast Diseases

- ▶ Breast Fistula: Differential Diagnosis and Management
- ▶ Disorders of the Male Breast
- ▶ Complications of Lactation
- ▶ Royal Pain: Practical Guide to Evaluating and Managing Breast Pain

Moderator: Richard Bleicher, MD

Jane Méndez, MD
Vincent Reid, MD
Katrina Mitchell, MD
Stephanie Valente, DO

11:00 AM

Adjourn

THE AMERICAN SOCIETY OF BREAST SURGEONS
21ST ANNUAL MEETING
APRIL 29 – MAY 3, 2020 LAS VEGAS, NEVADA

See you next year when we return to Bellagio in Las Vegas!

FACULTY AND PRESENTERS

as of 4/2/19

Michael Alatraste, LMT, CLT
Lymphedema Alliance of New York
New York, NY

Zahraa Al-Hilli, MD, FACS
Cleveland Clinic
Cleveland, OH

Amulya Alapati, MD
Beth Israel Deaconess Medical Center
Boston, MA

Lise Alschuler, ND, FABNO
University of Arizona, Center for
Integrative Medicine
Tucson, AZ
TAP Integrative
Green Bay, WI

Reza Antoszewska, MS, NP-C
Legacy Cancer Institute
Legacy Good Samaritan Hospital
Portland, OR

Eli Avisar, MD, FACS
Miller School of Medicine
University of Miami
Miami, FL

Paul L. Baron, MD, FACS
Montefiore Medical Center/Albert
Einstein College of Medicine
New York, NY

Julie L. Barone, MD, FACS
Comprehensive Breast Care of Denver
Denver, CO

Richard J. Barth, Jr., MD
Dartmouth-Hitchcock Medical Center
Lebanon, NH

Alex Bartholomew, MD
Georgetown University
Washington, DC

Hania B. Bednarski, DO, FACOS
Mercy Health
Maryville, IL

Isabelle Bedrosian, MD, FACS
The University of Texas MD
Anderson Cancer Center
Houston, TX

Debbie Lee Bennett, MD
St. Louis University School of Medicine
St. Louis, MO

Jessica M. Bensenhaver, MD, FACS
Henry Ford Health System
Detroit, MI

Michael P. Berry, MD, FACS
The Margaret West Comprehensive
Breast Center
Germantown, TN

Tiffany Berry, MD, MBA, FACS
Norton Surgical Specialists
Louisville, KY

Therese B. Bevers, MD
The University of Texas MD
Anderson Cancer Center
Houston, TX

Sarah Blair, MD, FACS
University of California San Diego
La Jolla, CA
@SarahLBlairMD

Richard J. Bleicher, MD, FACS
Fox Chase Cancer Center
Philadelphia, PA
@RichardBleicher

Peter W. Blumencranz, MD, FACS
The Comprehensive Breast Care
Center of Tampa Bay
Clearwater, FL

Francesco Boccardo MD, PhD, FACS
IRCCS San Martino Hospital,
Department of Surgery, Lymphatic
Microsurgery
University of Genoa
Genoa, Italy

Susan K. Boolbol, MD, FACS
Mount Sinai Beth Israel
New York, NY
@sboolbol

Judy C. Boughey, MD, FACS
Mayo Clinic
Rochester, MN
@DrJudyBoughey

David R. Brenin, MD, FACS
University of Virginia Health
Sciences Center
Charlottesville, VA

William E. Burak, MD, FACS
Memorial University Health System
Savannah, GA

Katherina Zabicki Calvillo, MD, FACS
Dana Farber Cancer Institute
Harvard Medical School
Boston, MA

Michele M. Carpenter, MD, FACS
UCLA Health Breast Surgery
Orange, CA
@ladysurg

Jodi M. Carter, MD, PhD
Mayo Clinic
Rochester, MN

Abigail S. Caudle, MD, FACS
The University of Texas MD
Anderson Cancer Center
Houston, TX
@AbigailCaudleMD

**Anees B. Chagpar, MD, MSc, MPH,
MA, MBA, FACS, FRCS(C)**
Yale University School of Medicine
New Haven, CT
@aneeschagpar

Abhishek Chatterjee, MD, MBA, FACS
Tufts Medical Center
Boston, MA

Steven L. Chen, MD, MBA, FACS
OasisMD
San Diego, CA

Chelsey Ciambella, MD
Warren Alpert Medical School of Brown
University/Rhode Island Hospital
Providence, RI

Costanza Cocilovo, MD
Inova Schar Cancer Institute
Fairfax, VA

Hiram (Chip) S. Cody, III, MD, FACS
Memorial Sloan-Kettering
Cancer Center
New York, NY

Suzanne B. Coopey, MD, FACS
Massachusetts General Hospital
Boston, MA
@SCOopeyMD

Lisa B. Curcio, MD, FACS
Breast Link - Laguna Hills
Laguna Hills, CA

Brian J. Czerniecki, MD, PhD, FACS
Moffitt Cancer Center
Tampa, FL

Amy C. Degnim, MD, FACS
Mayo Clinic
Rochester, MN

Sarah M. DeSnyder, MD, FACS
University of Texas MD Anderson
Cancer Center
Houston, TX

Jill R. Dietz, MD, FACS
University Hospitals Case
Medical Center
Cleveland, OH

J. Michael Dixon, OBE, MD
Edinburgh Breast Unit, Western
General Hospital
Breast Cancer Now Research Unit
Edinburgh, Scotland

Beth DuPree, MD, FACS, ABOIM
Northern Arizona Healthcare
Sedona, AZ
@drbethdupree

Thomas L. Eisenhauer, MD, FACS
PARDEE – UNC Health Care
Hendersonville, NC

Souzan E. El-Eid, MD, FACS
US Oncology
Las Vegas, NV
@souzaneleid

Mahmoud El-Tamer, MD, FACS
Memorial-Sloan Kettering
Cancer Center
Weill Cornell Medical College
New York, NY

David M. Euhus, MD, FACS
Johns Hopkins Hospital
Baltimore, MD

Jeffrey S. Falk, MD, FACS
Ascension St. John Hospital
Grosse Pointe Woods, MI

Betty Fan, DO
Cleveland Clinic
Cleveland, OH

Michael J. Farrell, MD, FACS
UHS Medical Group
Vestal, NY

Sheldon M. Feldman, MD, FACS
Montefiore Medical Center/
Albert Einstein College of Medicine
New York, NY

Richard E. Fine, MD, FACS
The Margaret West Comprehensive
Breast Center
West Cancer Center Breast Surgical
Oncology Fellowship
Memphis, TN

Meghan R. Flanagan, MD, MPH
Memorial Sloan Kettering
Cancer Center
New York, NY
@meghanrflanagan

Sara J. Fredrickson, MD, FACS
Northwestern Medicine Regional
Medical Group
Winfield, IL

Jennifer S. Gass, MD, FACS
Women and Infants' Hospital
Providence, RI
@jensgass

Mark A. Gittleman, MD, FACS
Targeted Medical Education (TME)
Allentown, PA

Christopher C. Glaser, MD, FACS
Owensboro Health Regional Hospital
Owensboro, KY

Ameer Gomberawalla, MD, FACS
Advocate Christ Medical Center
Oak Lawn, IL

Ian P. Grady, MD, FACS
University of California, Davis
Sacramento, CA
North Valley Breast Clinic
Redding, CA

Rachel A. Greenup, MD, MPH, FACS
Duke Cancer Institute
Durham, NC

Stephen R. Grobmyer, MD, FACS
Cleveland Clinic
Cleveland, OH

Janie Gia-Lin Grumley, MD, FACS
John Wayne Cancer Institute
Providence Saint John's Health Center
Santa Monica, CA

Clarisa C. Hammer, DO, FACS
Invoa Alexandria Hospital
Alexandria, VA

Regina Hampton, MD, FACS
Doctors Community Hospital
Lanham, MD
@DrReginaHampton

FACULTY AND PRESENTERS

Linda K. Han, MD, FACS
Parkview Cancer Institute
Ft. Wayne, IN

Jay K. Harness, MD, FACS
St. Joseph Hospital
Orange, CA

Ronda S. Henry-Tillman, MD, FACS
Winthrop P. Rockefeller Cancer
Institute, University of Arkansas for
Medical Sciences
Little Rock, AR

Tina J. Hieken, MD, FACS
Mayo Clinic
Rochester, MN
@TJH0828

Alan B. Hollingsworth, MD, FACS
Mercy Hospital – Oklahoma City
Oklahoma City, OK
@abhollingsworth

Dennis R. Holmes, MD, FACS
John Wayne Cancer Institute
Santa Monica, CA
@DoctorHolmesLA

Kevin S. Hughes, MD, FACS
Massachusetts General Hospital
Boston, MA

Kelly K. Hunt, MD, MD, FACS
The University of Texas at MD
Anderson Cancer Center
Houston, TX

E. Shelley Hwang, MD, MPH, FACS
Duke University Medical Center
Durham, NC

Rosa F. Hwang, MD, FACS
The University of Texas MD
Anderson Cancer Center
Houston, TX

David M. Hyams, MD, FACS
Desert Surgical Oncology
Rancho Mirage, CA

Jordan M.S. Jacobs, MD
Mount Sinai Downtown
New York, NY

Ted A. James, MD, MHCM, FACS
Beth Israel Deaconess Medical Center
Boston, MA
@tedjamesmd

Robert Jasak, JD
Heart Health Strategies, Inc.
Washington, DC

Nathalie G. Johnson, MD, FACS
Legacy Cancer Institute
Portland, OR
@nemtipi

Alexander C. Kagen, MD
Mount Sinai West
New York, NY

Olga Kantor, MD
University of Chicago
Chicago, IL

Scott R. Karlan, MD, FACS
Cedars-Sinai Medical Center
Los Angeles, CA

Cary S. Kaufman, MD, FACS
University of Washington/Bellingham
Regional Breast Center
Bellingham, WA

David I. Kaufman, MD, FACS
Breast Cancer Program and Breast
Health Center St. Joseph Hospital-
Catholic Health Services of Long Island
Donald and Barbara Zucker School
of Medicine at Hofstra/Northwell
Bethpage, NY

Alysha Keehn, MD
University of Calgary
Alberta, Canada

John S. Kennedy, MD, FACS
DeKalb Surgical Associates
Decatur, GA
@jskennedymd

Sadia Khan, DO, FACS, FACOS
Hoag Memorial Hospital Presbyterian
Newport Beach, CA
Keck School of Medicine, The University
of Southern California
Los Angeles, CA

Amal Khoury, MD, MPH
University of California San Francisco,
East Bay Surgery Program
San Francisco, CA

Brigid K. Killelea, MD, MPH, FACS
Yale School of Medicine
Smilow Cancer Hospital
New Haven, CT

V. Suzanne Klimberg, MD, PhD, FACS
The University of Texas Medical Branch
Galveston, TX

Anne M. Kobbermann, MD, FACS
Midwest Breast Care
Overland Park, KS

Katherine A. Kopkash, MD, FACS
NorthShore University HealthSystem
Evanston, IL

Reed Kuehn, MD, FACS
Women and Infants Hospital of
Rhode Island
Providence, RI

Henry M. Kuerer, MD, PhD, FACS
The University of Texas MD
Anderson Cancer Center
Houston, TX
@HenryKuerer

Swati Kulkarni, MD, FACS
Northwestern University, Feinberg
School of Medicine
Robert H. Lurie Comprehensive
Cancer Center
Chicago, IL

Amanda Kupstas, MD
Mayo Clinic
Rochester, MN

Scott H. Kurtzman, MD, FACS
Waterbury Hospital
Waterbury, CT

Rachel Lee, MD
Winship Cancer Institute/
Emory University
Atlanta, GA

Jessica W.T. Leung, MD
The University of Texas MD
Anderson Cancer Center
Houston, TX

Charles D. Mabry, MD, FACS
Surgeons of South Arkansas
Pine Bluff, AR

Terry P. Mamounas, MD, MPH, FACS
Orlando Health
Orlando, FL

Eric R. Manahan, MD, MBA, FACS
Hamilton Medical Center
Dalton, GA
@ermanmd

Julie A. Margenthaler MD, FACS
Washington University School of
Medicine
St. Louis, MO
@margenthalerj

Sarah A. McLaughlin, MD, FACS
Mayo Clinic
Jacksonville, FL

Pallav K. Mehta, MD
MD Anderson Cancer Center at Cooper
Camden, NJ

Jane E. Méndez, MD, FACS
Miami Cancer Institute
Miami, FL

Katrina B. Mitchell, MD, FACS
Presbyterian Health Services
Albuquerque, NM

Sunny D. Mitchell, MD
Stratford, CT

**Elizabeth A. Mittendorf, MD, PhD,
FACS**
Dana-Farber/Brigham and
Women's Cancer Center
Boston, MA

Alexander T. Nguyen, MD, FACS, CLT
Reconstructive Microsurgery and
Lymphedema Associates
Dallas, TX

Toan T. Nguyen, MD, FACS
Lakeland Regional Health
Lakeland, FL
@ToanNguyenMD

Akiko Ogiya, MD
Cancer Institute Hospital, Japanese
Foundation for Cancer Research
Tokyo, Japan

Kim Okerson, CPC
The Coding Network, LLC
Beverly Hills, CA

Javier Orozco, MD, MSc
John Wayne Cancer Institute at
Providence Saint John's Health Center
Santa Monica, CA



FACULTY AND PRESENTERS

Helen A. Pass, MD, FACS

Stamford Hospital
Stamford, CT

Rakesh R. Patel, MD

Good Samaritan Hospital
Los Gatos, CA

Sharla Gayle Patterson, MD, MBA, FACS

Naples Community Hospital
Naples, FL

Lashan Peiris, MBBS, BSc, FRCS (Lon)

Misericordia Community Hospital
Edmonton, AB
Canada

Anne Peled, MD

University of California, San Francisco
School of Medicine
San Francisco, CA

James V. Pellicane, MD, FACS

Bon Secours/Virginia Breast Center, Inc.
Richmond, VA
@jpellicane

Rogsbert F. Phillips, MD, FACS

Emory University Midtown Hospital
Atlanta, GA

Jennifer K. Plichta, MD, MS, FACS

Duke University
Durham, NC
@JenniferPlichta

Jennifer M. Racz, MD, MBA, FRCSC

Mayo Clinic
Rochester, MN

Jocelyn Rapelyea, MD

George Washington University
Medical Faculty Associates
Washington, DC

Vincent J. Reid, MD, FACS

University of Iowa and Mercy Medical
Center
Cedar Rapids, IA

Juliann M. Reiland, MD, FACS

Avera Medical Group Comprehensive
Breast Care
Sioux Falls, SD
@DrJulieReiland

William Repicci

Lymphatic Education & Research
Network (LE&RN)
New York, NY

Sheila Ridner, PhD, RN, FAAN

Vanderbilt University School of Nursing
Nashville, TN

Barry S. Rosen, MD, FACS

Advocate Healthcare
Chicago, IL

Jessica L. Ryan, MD, FACS

CMC Breast Care Center
Bedford, NH

Michael S. Sabel, MD, FACS

University of Michigan
Ann Arbor, MI
@MSabelMD

Tara Sanft, MD

Yale School of Medicine
New Haven, CT

Terry Sarantou, MD, FACS

Levine Cancer Institute, Carolinas
Medical Center, Atrium Health
Charlotte, NC

William Scarlett, DO, FACS, FACOS, FAACS

Holy Redemer Hospital
Bensalem, PA

Theresa Schwartz, MD, MS, FACS

St. Louis University Hospital
St. Louis, MO

Barbara S. Schwartzberg, MD, FACS

Sarah Cannon Research Institute at
Rose Medical Center
Western Surgical Care, P.C.
Denver, CO

Molly L. Sebastian, MD, FACS

Virginia Hospital Center
Arlington, VA

Julia Shaner, MS, CGC

Mount Sinai Beth Israel
New York, NY

Melvin J. Silverstein, MD, FACS

Hoag Memorial Hospital
Newport Beach, CA

William Small, Jr., MD, FACRO, FACR, FASTRO

Loyola Medicine
Maywood, IL

Barbara L. Smith, MD, PhD

Massachusetts General Hospital
Boston, MA

Linda A. Smith, MD, FACS

Breast Surgeon
Albuquerque, NM

Mark L. Smith, MD, FACS

Northwell Health System Northwell
Health Cancer Institute Friedman
Center for Lymphedema Research
and Treatment
Lake Success, NY

Howard C. Snider, Jr., MD, FACS

Montgomery, AL

Atilla Soran, MD

Magee-Womens Hospital of UPMC
Pittsburgh, CA

Alicia Staley

Patient Advocate
Boston, MA

Edgar D. Staren, MD, PhD, MBA, FACS

TransMed7, LLC
Paradise Valley, AZ

Toni L. Storm-Dickerson, MD, FACS

Compass Oncology
Vancouver, WA

Susie Sun, MD, MS

The University of Texas MD
Anderson Cancer Center
Houston, TX
@SusieSunMD

Mark Taylor, MD

Huntsman Cancer Institute at the
University of Utah
Salt Lake City, UT

Walton A. Taylor, MD, FACS

True Surgical Partners
Dallas, TX

Paul Thiruchelvam, BSc, MD, FRCS, PhD

Imperial College of Healthcare, London
London, England
@1LondonBreast

Carrie A. Thoms, MD, FACS

Fox Valley Surgical Associates
Appleton, WI

Madeline Thornton, BA

Duke University
Durham, NC

Alyssa D. Throckmorton, MD, FACS

Baptist Medical Group - Memphis
Breast Care
Memphis, TN
@throthead

Judy Tjoe, MD, FACS

Advocate Aurora Health
Aurora, IL

Antonio Toesca, MD

European Institute of Oncology (EIO)
IRCCS
Milan, Italy

Katerina Tsiapali, MD, FACS

Medstar Regional Breast Health Pro-
gram/George Washington University
Washington, DC

John F. Turner, III, MD, FACS

Thyra M. Humphreys Center for Breast
Health
Lewisburg, PA

Stephanie A. Valente, DO, FACS

Cleveland Clinic
Cleveland, OH
@DrStephValente

Kimberly J. Van Zee, MS, MD, FACS

Memorial Sloan Kettering Cancer Center
Weill Medical College of Cornell University
New York, NY

Aislinn S. Vaughan, MD, FACS

SSM Medical Group
St. Louis, MO
@aislinnvaughan

Alicia Huff Vinyard, DO

Augusta University Medical Center
Augusta, GA

Courtney A. Vito, MD, FACS

Optum Care Cancer Center
Las Vegas, NV

Brooke Vuong, MD

Kaiser Permanente of South Sacramento
Medical Center
Sacramento, CA

Seenu Vuthaluru, MD

All India Institute of Medical Sciences
Delhi, India

Kathryn A. Wagner, MD, FACS

Texas Breast Specialists, Texas
Oncology PA
San Antonio, TX

Amanda J. Wheeler, MD, FACS

Sutter Health
San Mateo, CA

Richard L. White, Jr., MD, FACS

Levine Cancer Institute
Department of Surgery, Carolinas
Medical Center, Atrium Health
Charlotte, NC

Pat W. Whitworth, MD, FACS, FSSO

Nashville Breast Center
Nashville, TN
@WhitworthMD

Lee G. Wilke, MD, FACS

University of Wisconsin
Madison, WI

Shawna C. Willey, MD, FACS

MedStar Georgetown University
Hospital
Washington, DC
@SCWilley

Stephanie Wong, MD

Dana Farber/Brigham and Women's
Cancer Center
Boston, MA

Whitney Young, MD

Mayo Clinic
Rochester, MN

Katharine A. Yao, MD, FACS

NorthShore University Health System,
Evanston Hospital
Evanston, IL

Victor J. Zannis, MD, FACS

Comprehensive Breast Center of
Arizona - Greenway
Phoenix, AZ

Jennifer Zhang, MD

Beth Israel Deaconess
Boston, MA

COMMERCIAL EXHIBITS AND SUPPORTERS

Visit the industry's top vendors in the Exhibit Hall located in the Trinity Exhibit Hall. Exhibitors will showcase the latest technology and the newest procedures. You will be able to meet with company representatives and see this technology first-hand.

The American Society of Breast Surgeons gratefully acknowledges the unrestricted educational grants, marketing support, and gifts in kind received from the following companies and thanks them for helping the Society continue its mission of encouraging the study of breast surgery, promoting research and development of advanced surgical techniques, improving the standards of practice for breast surgery in the United States, and serving as a forum for the exchange of ideas.

Educational Grants/Gifts in Kind*

BD/Bard Biopsy Systems	Johnson & Johnson Medical Devices
Carl Zeiss Meditec, Inc.	KCI, An Acelity Company
Cianna Medical, Inc., Powered by Merit Medical	Kubtec Medical Imaging, Inc.
ConMed Advanced Surgical Division	Leica Biosystems/Mammotome
Endomag	Medtronic Advanced Energy, LLC
FluoOptics Imaging, Inc.	Merck & Co., Inc.
Fujifilm SonoSite, Inc.	Mitaka USA, Inc.
Genentech, Inc.	Myriad Genetics, Inc.
Hitachi Healthcare	OBP Medical, Inc.
Hoag Memorial Hospital Presbyterian	Pacira Pharmaceuticals, Inc.
Hologic, Inc.	Phillips Healthcare
IceCure Medical, Inc.	Ronin Surgical Corporation
ImpediMed, Inc.	Siemens Healthineers
IntraOp Medical, Inc.	Stryker
Invitae	Tactile Medical
JOBST	Terason Corporation
John Wayne Cancer Foundation	TransMed7 Corporation
	W.L. Gore & Associates, Inc.

Marketing Support*

Albert Einstein College of Medicine	ImpediMed, Inc.
Allergan	Invitae
Ambry Genetics, Inc.	Lymphatic Education & Research Network (LE&RN)
BD/Bard Biopsy Systems	Masthead
Cardinal Health	Merck & Co., Inc.
Cianna Medical, Inc., Powered by Merit Medical	Myriad Genetics, Inc.
Dilon Technologies, Inc.	OBP Medical, Inc.
GE Healthcare	Pacira Pharmaceuticals, Inc.
Genentech, Inc.	Peerview Institute
Genomic Health, Inc.	Stryker
Hologic, Inc.	

*as of 4/5/19

Industry Relations Council Members

Dune Medical Devices, Inc.	ImpediMed, Inc.
Endomag	KCI, An Acelity Company
Genentech, Inc.	Medtronic
Genomic Health, Inc.	Merck & Co., Inc.
Hologic, Inc.	Myriad Genetics, Inc.
IceCure Medical, Inc.	Stryker

Exhibitor Registration Hours

Trinity Prefunction

Wednesday	8:00 AM-5:00 PM
Thursday.....	8:00 AM-7:30 PM
Friday	8:00 AM-5:00 PM
Saturday	8:00 AM-2:00 PM

Exhibit Hall Hours, General Session Breaks and Lunch Schedule for the Exhibit Hall

Trinity Exhibit Hall

Thursday, May 2

Opening Reception 7:30 PM-9:00 PM

Friday, May 3

Exhibit Hall Hours.....	9:00 AM-4:00 PM
AM Break	9:30 AM-10:00 AM
Lunch.....	Noon-1:00 PM
PM Break.....	3:30 PM-4:00 PM

Saturday, May 4

Exhibit Hall Hours.....	9:00 AM-4:00 PM
AM Break	9:15 AM-9:45 AM
Lunch.....	Noon-1:30 PM
PM Break.....	3:15 PM-3:45 PM

NEW:

Fellows Lounge

Fellows will be able to meet with society leaders and network with their peers during breaks and lunch on Friday and Saturday.*

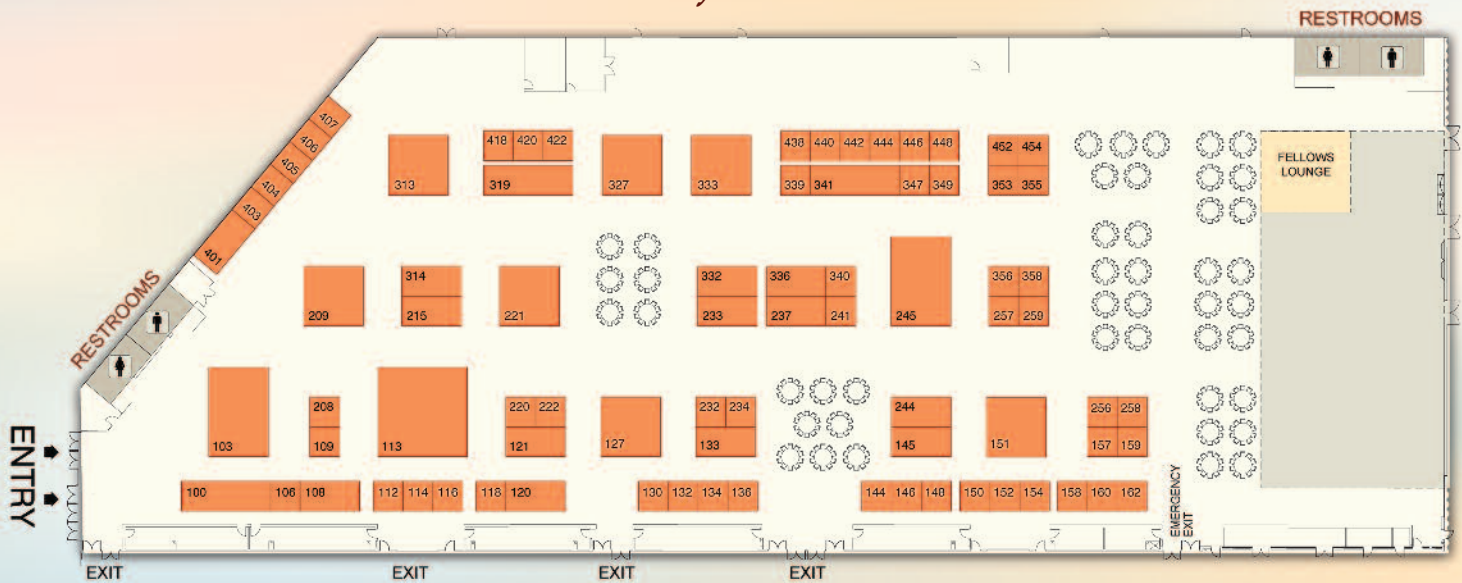
**The Fellows Lounge is supported by Genomic Health, Inc., through a marketing grant.*



COMMERCIAL EXHIBITS AND SUPPORTERS

Exhibit Hall

Trinity Exhibit Hall



List of Exhibitors (as of April 5, 2019)

Company Name	Booth No.	Company Name	Booth No.	Company Name	Booth No.
Agendia.....	109	Elucient Medical.....	341	Merck & Co., Inc.....	108
Ambry Genetics, Inc.....	241	Endomag.....	327	Mitaka USA, Inc.....	349
American Breast Care.....	152	Evolve Med Tech.....	355	Myriad Genetics, Inc.....	209
American College of Surgeons – Cancer Programs.....	404	Fujifilm SonoSite.....	232	OBP Medical, Inc.....	336
Amoena.....	130	GE Healthcare.....	258	OptumCare Breast Care.....	160
Applied Medical.....	136	Genomic Health, Inc.....	233	Pacira Pharmaceuticals, Inc.....	237
BD/Bard Biopsy Systems.....	221	Healing Consciousness Foundation.....	405	Pathy Medical, LLC.....	422
Best Medical International.....	245	Hitachi Healthcare.....	215	Perimeter Medical Imaging.....	356
Biom'up.....	442	Hologic, Inc.....	103	Phillips Ultrasound.....	134
Biotheranostics.....	339	IceCure Medical, Inc.....	314	Prairie Wear Ltd.....	420
Bocca.....	440	IER Innovations.....	444	PreludeDx.....	120
Boiron.....	448	ImpediMed, Inc.....	100	Prevea Health.....	162
BOSS Instruments, Ltd.....	220	Infinity Massage Chairs.....	452	Progeny Genetics.....	118
Cardinal Health.....	133	Intramedical Imaging.....	418	Ronin Surgical Corporation.....	132
Care Wise (c/o Southern Scientific Limited).....	340	IntraOp Medical Corporation.....	244	School of Oncoplastic Surgery.....	148
Carl Zeiss Meditec, Inc.....	112	Invitae.....	144	Seimens Healthineers.....	154
Chison Medical Technologies Co.,Ltd.....	438	Jeunesse Innovations.....	446	Silbiotech, Inc.....	347
Cianna Medical, Powered by Merit Medical.....	313	Kaiser Permanente.....	150	Stryker.....	113
CMR Naviscan Corporation.....	259	KCI, An Acelity Company.....	157	Tactile Medical.....	403
Concure Oncology / Breast Microseed Treatment.....	358	Kubtec Medical Imaging, Inc.....	151	Terason Corporation.....	222
ConMed Advanced Surgical Division.....	401	Mammotome.....	333	The US Oncology Network.....	116
Dilon Technologies Inc.....	158	Lumicell.....	114	TransMed7, LLC.....	145
Dune Medical Devices, Inc.....	127	Lymphatic Education & Research Network.....	406	TS Medical USA.....	454
Elsevier, Inc.....	256	Masthead.....	106	Vector Surgical.....	332
		Marena Recovery.....	159	Volpara Solutions.....	257
		MedNeon.....	353	Wolters Kluwer.....	208
		Medtronic.....	319	Xoft, a subsidiary of iCAD Inc.....	121

ENGINEERED TO LEAD

in Core Needle Biopsy

Powerful. Precise.

Unparalleled procedural versatility from a comprehensive core needle offering two firing modes and two penetration depths.



BARD® MARQUEE®
Disposable Core Biopsy Instrument



POWERFUL
Automatic fire mode gives you the power you've come to expect from Bard core needles.

ADJUSTABLE
Dual mode disposable core biopsy device with an adjustable penetration depth that offers you a choice between 18 mm and 25 mm for additional control.

PRECISE
Semi-automatic mode enables you to fire the stylet only, providing you with visual confirmation of the sample notch placement.

Visit us at Booth #221

Please consult product labels and inserts for complete indications, contraindications, hazards, warnings, precautions and directions for use.

1.800.321.4254 www.bard.com/biopsy

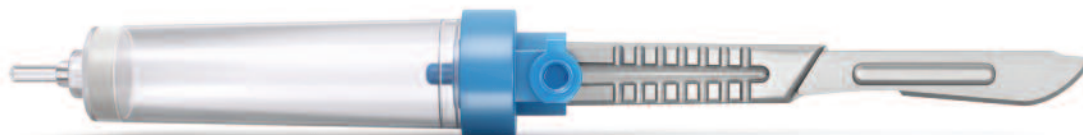
© 2019 BD, BD, the BD Logo and all other trademarks are property of Becton, Dickinson and Company. BPV/CORB/0319/0059



BARD
has joined BD

In High-risk Breast Cancer^a

Neoadjuvant Therapy + Surgery Together



Preoperative systemic therapy may benefit certain high-risk breast cancer patients^{1,2,a}

Potential preoperative benefits include^{3,b}:

- Downstaging the tumor
- Breast conservation
- Assessment of tumor response to systemic therapy

Potential long-term benefits in neoadjuvant patients who achieved a pCR (vs those who did not) include^{3,b}:

- Favorable event-free survival
- Favorable overall survival

Patients with more aggressive subtypes have been shown to have an increased likelihood of achieving a pCR.²

Consider neoadjuvant therapy

for high-risk patients, such as stage II and III TNBC and HER2+ breast cancer patients^{1,3,a}

Learn more at WhyNeoadjuvant.com

^a“High-risk” defined as early-stage breast cancer patients who have a high risk of distant disease recurrence and death despite use of optimal modern local and systemic adjuvant therapy.⁴

^bCTNeoBC pooled analysis: 12 international trials of 11,955 patients with breast cancer treated with preoperative chemotherapy followed by surgery, with available data for EFS, OS, and pCR; pCR was not the primary end point for evaluation. Three most commonly used definitions of pCR were evaluated for their association with EFS or OS. Patients who attained pCR demonstrated improved EFS and OS vs those who had residual disease. The prognostic value was greatest in aggressive tumor subtypes, particularly TNBC and HER2+.²

CTNeoBC = Collaborative Trials in Neoadjuvant Breast Cancer; EFS = event-free survival; HER2 = human epidermal growth factor receptor 2; OS = overall survival; pCR = pathological complete response; TNBC = triple-negative breast cancer.

References: 1. Wirapati P, Sotiriou C, Kunkel S, et al. Meta-analysis of gene expression profiles in breast cancer: toward a unified understanding of breast cancer subtyping and prognosis signatures. *Breast Cancer Res.* 2008;10(4):R65. doi:10.1186/bcr2124. 2. Cortazar P, Zhang L, Untch M, et al. Pathological complete response and long-term clinical benefit in breast cancer: the CTNeoBC pooled analysis. *Lancet.* 2014;384(9938):164–172. 3. Referenced with permission from the NCCN Clinical Practice Guidelines in Oncology (NCCN Guidelines®) for Breast Cancer V.4.2018. © National Comprehensive Cancer Network, Inc. 2019. All rights reserved. Accessed March 14, 2019. To view the most recent and complete version of the guidelines, go online to NCCN.org. 4. US Department of Health and Human Services, Food and Drug Administration, Center for Drug Evaluation and Research (CDER). Guidance for Industry. Pathological complete response in neoadjuvant treatment of high-risk early-stage breast cancer: use as an endpoint to support accelerated approval. www.fda.gov/downloads/drugs/guidances/ucm305501.pdf. Published October 2014. Accessed March 14, 2019.



Merck Oncology

Copyright © 2019 Merck Sharp & Dohme Corp., a subsidiary of Merck & Co., Inc. All rights reserved. US-OBR-00035 03/19